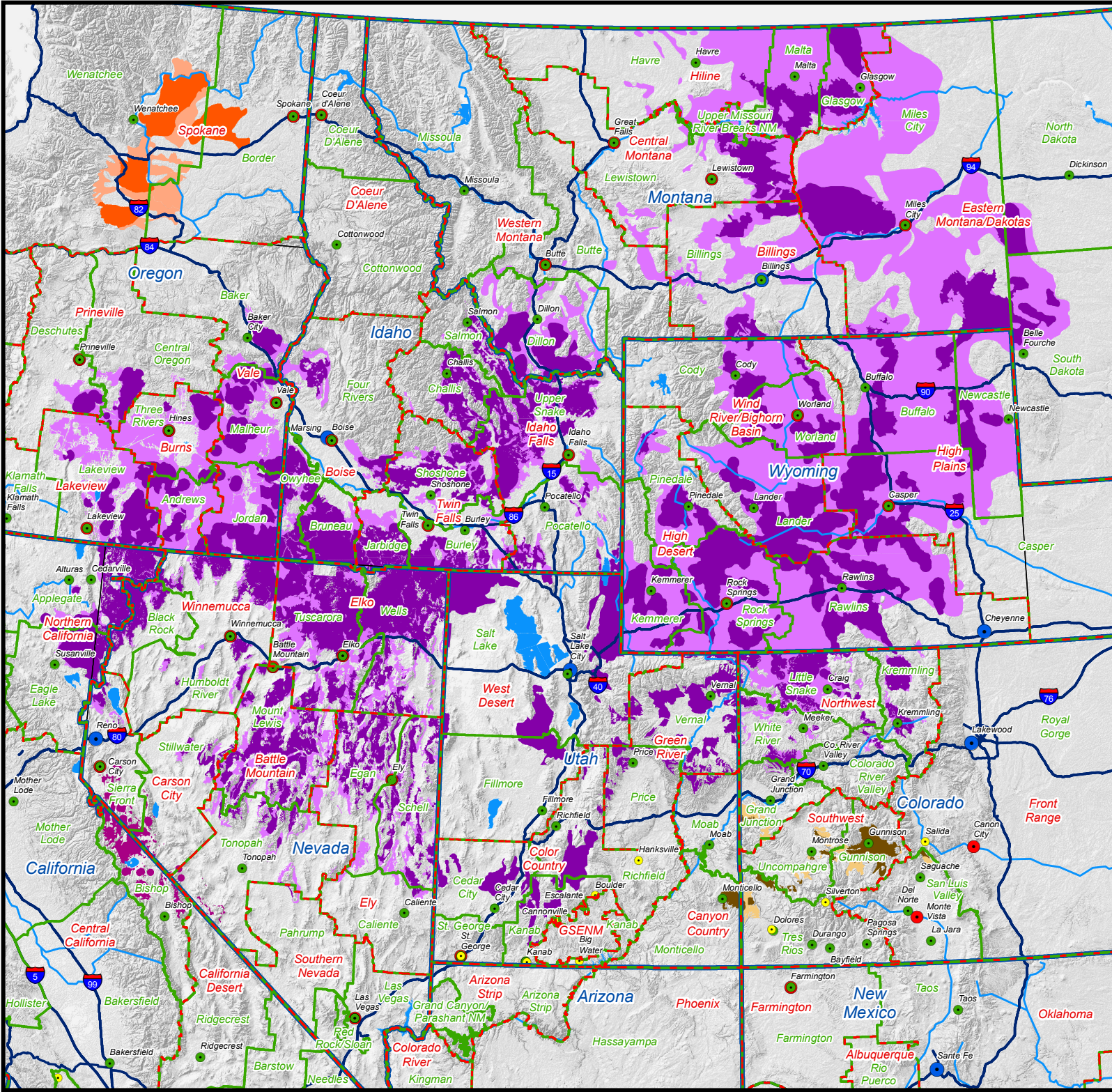


# Range-Wide Greater Sage-Grouse and Gunnison Sage-Grouse Habitat 2012 - 2015



- Legend**
- Preliminary Priority Habitat (PPH)
  - Preliminary General Habitat (PGH)
  - GUSG Occupied Habitat
  - GUSG Unoccupied Habitat
  - Bi-State Priority Habitat
  - Columbia Basin - Priority Areas for Conservation (PAC)
  - Columbia Basin - Recovery Habitat
  - BLM District Office Boundaries
  - BLM Field Office Boundaries
  - BLM State Office Boundaries
  - Administrative State Office
  - Administrative District Office
  - Administrative Field Office
  - Field Stations, Monuments, and Other Administrative Types

**Note:**  
For habitat type descriptions for Gunnison Sage-Grouse (GUSG), Greater Sage-Grouse (GRSG), and the Bi-State and Columbia Basin Distinct Population Segments, please see State and District-scale maps.

**Data Sources:**  
**BLM Administrative Boundaries and Office Locations:** Downloaded from GeoSpatial Gateway, 05/20/2015.  
**GRSG PPH/PGH:** Current as of 08/07/2013. For detailed source information and to access the data, please visit: [http://www.blm.gov/wo/st/en/prog/more/sagegrouse/documents\\_and\\_resources.html](http://www.blm.gov/wo/st/en/prog/more/sagegrouse/documents_and_resources.html)  
**Gunnison SG (GUSG) Occupied/Unoccupied Habitat:** Acquired from the BLM CO State Office on 08/22/2015.  
**Bi-State Habitat:** Current as of 12/03/2012. Accompanies Bi-State Sage-Grouse Interim Policy IM NV-2013-009 and available at: [http://blm/dfs/loc/EGIS/ReferenceState/IV/CorporateData/wildlife/BLM Bi-State Sage-Grouse Habitat.lyr](http://blm/dfs/loc/EGIS/ReferenceState/IV/CorporateData/wildlife/BLM%20Bi-State%20Sage-Grouse%20Habitat.lyr)  
**Columbia Basin Population:** Acquired from the WA Department of Fish and Wildlife on 03/04/2015.

