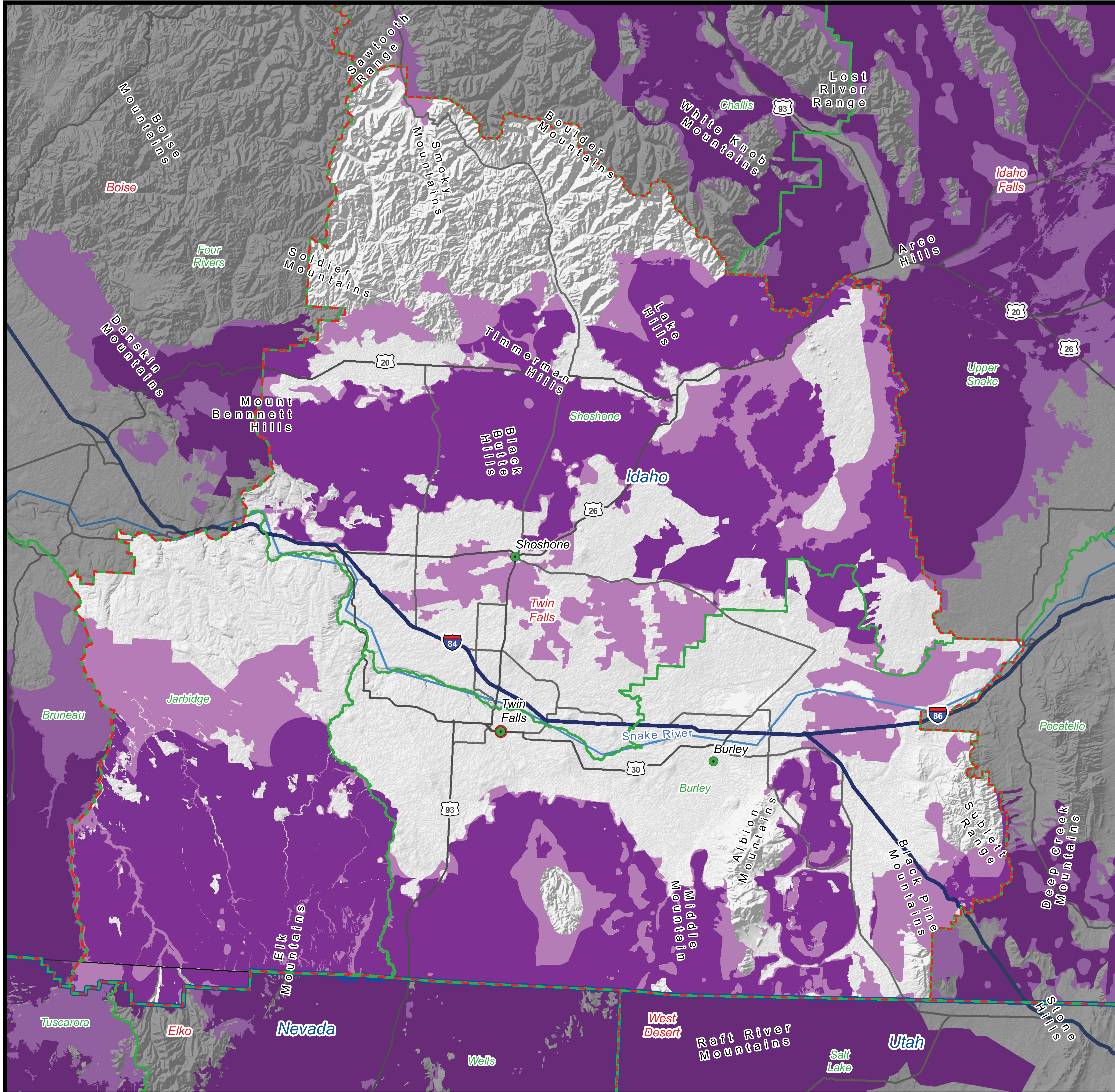





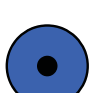

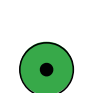
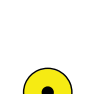


# Twin Falls Greater Sage-Grouse Habitat 2012 - 2015



## Legend

-  Preliminary Priority Habitat (PPH)
-  Preliminary General Habitat (PGH)
-  BLM State Office Boundaries
-  BLM District Office Boundaries
-  BLM Field Office Boundaries
-  Administrative State Office
-  Administrative District Office
-  Administrative Field Office
-  Field Stations, Monuments, and Other Administrative Types

## Description:

### Preliminary Priority Habitat (PPH) and Preliminary General Habitat (PGH):

Habitat designations developed by BLM and state agency biologists for all populations of GRSG (except the Bi-State and Columbia populations) which have been widely used since 2012. PPH is a higher value to protect, conserve and restore than PGH, and PGH is higher than other sagebrush vegetation.

**PPH:** Areas offering the highest quality GRSG habitat based upon bird density, lek location, community composition, intactness, or other variables.

**PGH:** Areas of relatively intact sagebrush communities which provide certain habitat requirements for GRSG.

## Data Sources:

**BLM Administrative Boundaries and Office Locations:**  
Downloaded from GeoSpatial Gateway, 05/20/2015.

**GRSG PPH/PGH:** Current as of 08/07/2013. For detailed source information and to access the data, please visit:  
[http://www.blm.gov/wo/st/en/prog/more/sagegrouse/documents\\_and\\_resources.html](http://www.blm.gov/wo/st/en/prog/more/sagegrouse/documents_and_resources.html).

