

**National Interagency Coordination Center  
Incident Management Situation Report  
Friday, April 27, 2012 – 0800 MT  
National Preparedness Level 1**

**National Fire Activity (April 20 – April 27)**

Initial attack activity: Light (695 new fires)  
 New large fires: 6 (\*)  
 Large fires contained: 6  
 Uncontained large fires: \*\* 1  
 Area Command Teams committed: 0  
 NIMOs committed: 0  
 Type 1 IMTs committed: 0  
 Type 2 IMTs committed: 0

Nationally there are no large fires being managed to achieve multiple objectives.

\*\* Uncontained large fires include only fires being managed under a full suppression strategy.

[Link](#) to Geographic Area daily reports.

**Southern Area (PL 2)**

New fires: 196  
 New large fires: 0  
 Uncontained large fires: 1

**County Line**, National Forests in Florida. Twenty-five miles north of Lake City, FL. Southern rough. Minimal fire activity.

Incident Name	St	Unit	Size	Size Chge 24 Hrs	% Ctn	Est Ctn	Totl Pers	Pers Chge 24 Hrs	Crw	Eng	Heli	Strc Lost	\$\$ CTD	Origin Own
County Line	FL	FNF	34,936	0	80	5/15	133	-3	1	17	3	0	6.1M	FS

**Eastern Area (PL 2)**

New fires: 263  
 New large fires: 2  
 Uncontained large fires: 0

Incident Name	St	Unit	Size	Size Chge 24 Hrs	% Ctn	Est Ctn	Totl Pers	Pers Chge 24 Hrs	Crw	Eng	Heli	Strc Lost	\$\$ CTD	Origin Own
* Little Mack Lake	MI	HMF	1,436	1,036	100	---	82	-48	0	13	2	0	100K	FS
* Klondike Cabin	MN	MNS	1,000	---	100	---	32	---	0	11	3	0	5K	ST

HMF – Huron-Manistee NF MNS – Minnesota DNR

**Rocky Mountain Area (PL 1)**

New fires: 21  
 New large fires: 2  
 Uncontained large fires: 0

Incident Name	St	Unit	Size	Size Chge 24 Hrs	% Ctn	Est Ctn	Totl Pers	Pers Chge 24 Hrs	Crw	Eng	Heli	Strc Lost	\$\$ CTD	Origin Own
* Hay Canyon	SD	SDS	9,884	2,884	100	---	17	-17	0	5	0	0	NR	ST
* Wick	SD	PRA	7,665	---	100	---	31	-6	0	12	0	0	128K	BIA

SDS – South Dakota DOF    PRA – Pine Ridge Agency, BIA

**Northwest Area (PL 1)**

New fires: 13  
 New large fires: 1  
 Uncontained large fires: 0

Incident Name	St	Unit	Size	Size Chge 24 Hrs	% Ctn	Est Ctn	Totl Pers	Pers Chge 24 Hrs	Crw	Eng	Heli	Strc Lost	\$\$ CTD	Origin Own
* Blue Mountain	OR	VAD	5,721	1,721	100	---	0	-7	0	0	0	0	75K	BLM

VAD – Vale District BLM

**Southwest Area (PL 1)**

New fires: 46  
 New large fires: 1  
 Uncontained large fires: 0

Incident Name	St	Unit	Size	Size Chge 24 Hrs	% Ctn	Est Ctn	Totl Pers	Pers Chge 24 Hrs	Crw	Eng	Heli	Strc Lost	\$\$ CTD	Origin Own
* Bar Clay	NM	N5S	301	---	100	---	34	-2	1	5	0	0	160K	ST

N5S – New Mexico State Forestry, Capitan District

**Predictive Services Discussion:** A closed low and lingering trough will remain over the West through early in the week while a ridge builds over the East. Scattered showers and thunderstorms, with snow at higher elevations, will move across most of the West through Sunday before a warm-up begins Monday. Gusty winds will develop along the east side of the Rockies from New Mexico into Colorado Friday and in eastern Montana and Wyoming on Saturday. A cold front will drop through the eastern states Friday and Saturday, bringing showers and thunderstorms followed by milder weather late in the weekend. Alaska will remain generally dry through the weekend with showers developing along the southern coast early in the week.

Predictive Services Outlook products: <http://www.predictiveservices.nifc.gov/outlooks/outlooks.htm>



## Today's discussion is from the Hazard Tree Category.

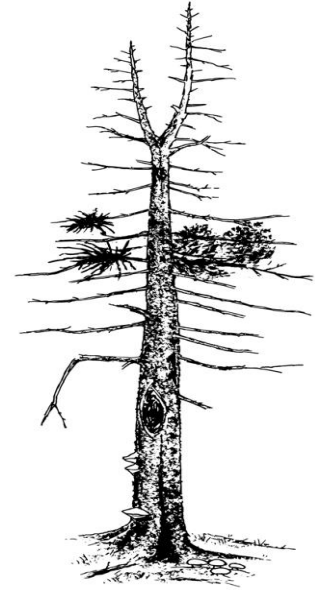
### HAZARD TREE FELLING – TIPS #1

Felling a hazard tree requires accurate risk assessment and complexity analysis, and demands the sawyer's full situational awareness. In all cases, remember to establish and maintain a secure felling area.

Do not bypass hazard trees without taking some action such as felling or establishing a No-Work-Zone.

Degree of hazard varies with tree size, species, and type/location of defect:

- Stem defects resulting in tree failure, i.e., collapse;
- Weakened sapwood resulting in loss of control when falling trees & limits solid wood for wedging;
- Overhead hazards, i.e., dead or hanging limbs falling on the faller.



Indicators of potential felling hazards:

- **Dead Limbs:** limbs of all sizes and species with decay evident cracking, or loose hung-up limbs. Avoid working under overhead hazards.
- **Witches Broom:** caused by mistletoe infection, limbs can grow very large and heavy (200+ lbs).
- **Split Trunk:** cracked trunk from frost, lightning or wind. Visible evidence of advanced decay indicates serious weakness where the tree could fail.
- **Stem Damage:** caused by windfall scarring, fire, machine, and animal damage, as well as heart rot diseases.
- **Thick Sloughing Bark or Sloughing Sapwood:** usually found on dead trees. Loose bark on Douglas fir or loose sapwood on wind snapped cedars can dislodge during falling.
- **Butt and Stem Cankers:** usually found on deciduous trees but can occur on Douglas fir and pine. The infected areas weaken the stem.
- **Fungal Fruiting Bodies or Conks:** found on stems may indicate massive interior rot 1 – 2 yards above and below conk. Excessive resinosis (resin flow) also indicates heart or root diseases.
- **Heavy Tree Lean:** may be caused by damaged roots or lifting root mats, shallow or wet soils. In some cases, the tree may have corrected itself which can be determined by looking for corrected top growth.
- **Root Condition:** look for any ground cracks around the base of the tree, signs of decay or fungal conks on the roots.
- **Cat Face:** look for enough solid wood to construct an effective undercut and back cut.

References: [Hazard Tree Safety Web Page](#)

---

Have an idea? Have feedback? Share it.

[ONLINE](#) | MAIL: 6 Minutes For Safety Task Group • 3833 S. Development Ave • Boise, ID 83705 | FAX: 208-387-5250

[6 Minutes Home](#)

### Fires and Acres April 20 – April 27

AREA		BIA	BLM	FWS	NPS	ST/OT	USFS	TOTAL
Alaska	FIRES					12	1	13
	ACRES					2	0	2
Northwest	FIRES	3	1			7	2	13
	ACRES	158	4,000			5	0	4,163
Northern California	FIRES					27	5	32
	ACRES					7	8	15
Southern California	FIRES		3			28	7	38
	ACRES		3			12	1	16
Northern Rockies	FIRES	7				6	1	14
	ACRES	75				410	11	496
Eastern Great Basin	FIRES	1	6			8	3	18
	ACRES	1	59			302	0	362
Western Great Basin	FIRES		26		1	12	2	41
	ACRES		60		0	7	3	70
Southwest	FIRES	8	8			11	19	46
	ACRES	13	139			711	274	1,137
Rocky Mountain	FIRES	1			1	16	3	21
	ACRES	7,665			15	10,335	7	18,022
Eastern Area	FIRES	64				183	16	263
	ACRES	55				3,072	204	3,331
Southern Area	FIRES				1	186	9	196
	ACRES				0	1,191	46	1,237
TOTAL	FIRES	84	44	0	3	496	68	695
	ACRES	7,967	4,261	0	15	16,054	554	28,851

### Fires and Acres Year-to-Date

AREA		BIA	BLM	FWS	NPS	ST/OT	USFS	TOTAL
Alaska	FIRES					10	1	11
	ACRES					1	0	1
Northwest	FIRES	23	3		1	50	2	79
	ACRES	1,222	5,923		3	706	0	7,854
Northern California	FIRES		1	1	2	335	47	386
	ACRES		0	0	1	571	50	622
Southern California	FIRES	7	30	1	5	520	104	667
	ACRES	9	8	0	1	807	90	915
Northern Rockies	FIRES	388	7	4	2	55	28	484
	ACRES	21,487	1,320	413	620	2,171	729	26,740
Eastern Great Basin	FIRES	9	30		2	88	9	138
	ACRES	103	122		0	1,004	157	1,386
Western Great Basin	FIRES		60		4	35	5	104
	ACRES		1,164		0	2,319	432	3,915
Southwest	FIRES	193	47	8	3	139	105	495
	ACRES	3,305	1,757	14	2,228	6,237	3,306	16,847
Rocky Mountain	FIRES	322	32	18	3	397	50	822
	ACRES	17,286	271	1,234	823	42,040	915	62,569
Eastern Area	FIRES	540		11	11	4,610	224	5,396
	ACRES	1,459		135	397	37,613	5,760	45,364
Southern Area	FIRES	207		17	21	8,198	268	8,711
	ACRES	30,768		14,916	3,443	105,832	46,905	201,864
TOTAL	FIRES	1,689	210	60	54	14,437	843	17,293
	ACRES	75,639	10,565	16,712	7,516	199,301	58,344	368,077

<b>Ten Year Average Fires</b>	<b>25,661</b>
<b>Ten Year Average Acres</b>	<b>889,426</b>

\*\*\* Changes in some agency YTD acres reflect more accurate mapping or reporting adjustments. \*\*\*

**Prescribed Fires and Acres April 20 – April 27**

AREA		BIA	BLM	FWS	NPS	ST/OT	USFS	TOTAL
Alaska	FIRES					1		1
	ACRES					177		177
Northwest	FIRES							0
	ACRES							0
Northern California	FIRES			0	2		6	8
	ACRES			5,491	3		725	6,219
Southern California	FIRES					1	4	5
	ACRES					550	21	571
Northern Rockies	FIRES		0	3			15	18
	ACRES		105	181			1,932	2,218
Eastern Great Basin	FIRES	0	1		1	0	10	12
	ACRES	643	160		156	7	3,915	4,881
Western Great Basin	FIRES						1	1
	ACRES						15	15
Southwest	FIRES						4	4
	ACRES						2,842	2,842
Rocky Mountain	FIRES	1	0	1	4		0	6
	ACRES	42	360	256	658		150	1,466
Eastern Area	FIRES	6		21	2	48	5	82
	ACRES	205		4,510	2	1,680	2,203	8,600
Southern Area	FIRES			3		156	41	200
	ACRES			809		6,948	41,928	49,685
TOTAL	FIRES	7	1	28	9	206	86	337
	ACRES	890	625	11,247	819	9,362	53,731	76,674

### Prescribed Fires and Acres Year-to-Date

AREA		BIA	BLM	FWS	NPS	ST/OT	USFS	TOTAL
Alaska	FIRES					0		0
	ACRES					307		307
Northwest	FIRES	1	30	3			46	80
	ACRES	5	1,222	909			6,251	8,387
Northern California	FIRES	2	13	12	21		130	178
	ACRES	107	203	14,752	150		9,536	24,748
Southern California	FIRES		6	4		1	147	158
	ACRES		1,516	125		550	3,600	5,791
Northern Rockies	FIRES	4	8	12	1	4	90	119
	ACRES	243	3,811	1,884	10	141	10,307	16,396
Eastern Great Basin	FIRES	2	13	2	4	17	30	68
	ACRES	463	424	188	269	334	8,897	10,575
Western Great Basin	FIRES		7	4		13	3	27
	ACRES		2,236	419		279	116	3,050
Southwest	FIRES	6	11	6	15		100	138
	ACRES	273	7,706	2,591	109		20,785	31,464
Rocky Mountain	FIRES	19	21	38	21	12	57	168
	ACRES	1,840	2,443	4,796	2,492	1,256	10,099	22,926
Eastern Area	FIRES	30		218	37	787	125	1,197
	ACRES	21,365		37,711	9,050	51,304	54,304	173,734
Southern Area	FIRES	22		115	50	6,326	771	7,284
	ACRES	4,743		46,695	34,384	394,458	737,839	1,218,119
TOTAL	FIRES	86	109	414	149	7,160	1,499	9,417
	ACRES	29,039	19,561	110,070	46,464	448,629	861,734	1,515,497

\*\*\* Changes in some agency YTD acres reflect more accurate mapping or reporting adjustments. \*\*\*

Additional wildfire information is available through the Geographic Areas at <http://gacc.nifc.gov/>.

This report contains information derived from the National Fire and Aviation Management Web Applications (FAMWEB) system and other sources to provide relative information about emerging and ongoing incident activity. This information is considered operational in nature, is subject to correction, and therefore may not match official year to date agency records.

\*\* National Interagency Coordination Center \*\*