

**National Interagency Coordination Center
Incident Management Situation Report
Wednesday July 17, 2013 – 0530 MT
National Preparedness Level 2**

National Fire Activity

Initial attack activity: Light (149 new fires)
 New large fires: 6 (*)
 Large fires contained: 0
 Uncontained large fires: ** 16
 Area Command Teams committed: 0
 NIMOs committed: 0
 Type 1 IMTs committed: 2
 Type 2 IMTs committed: 6

** Uncontained large fires include only fires being managed under a full suppression strategy.

[Link](#) to Geographic Area daily reports.

Southern California Area (PL 3)

New fires: 21
 New large fires: 0
 Uncontained large fires: 1
 Type 1 IMTs committed: 1

Mountain, San Bernadino NF. IMT 1 (Pincha-Tulley). Fourteen miles southwest of Palm Springs, CA. Timber and chaparral. Active fire behavior. Structures threatened. Evacuations and road closures in effect.

Incident Name	St	Unit	Size	Size Chge 24 Hrs	% Ctn	Est Ctn	Totl Pers	Pers Chge 24 Hrs	Crw	Eng	Heli	Strc Lost	\$\$ CTD	Origin Own
Mountain	CA	BDF	9,000	6,600	10	7/21	2,241	1,754	73	98	15	19	4M	ST

Northern Rockies Area (PL 2)

New fires: 8
 New large fires: 1
 Uncontained large fires: 3
 Type 2 IMTs committed: 3

West Mullan, Lolo NF. IMT 2 (Heintz). Four miles west of Superior, MT. Timber. Active fire behavior. Structures threatened. Evacuations in effect.

* **Gold Creek**, Lolo NF. IMT 2 (Benes). Sixteen miles northeast of Missoula, MT. Timber. Active fire behavior with single tree torching and short-range spotting. Road closures in effect.

Rough Creek, Nez Perce NF. IMT 2 (Fry). Six miles east of Riggins, ID. Timber and grass. Active fire behavior. Structures threatened.

Incident Name	St	Unit	Size	Size Chge 24 Hrs	% Ctn	Est Ctn	Totl Pers	Pers Chge 24 Hrs	Crw	Eng	Heli	Strc Lost	\$\$ CTD	Origin Own
West Mullan	MT	LNF	1,800	1,100	15	UNK	353	176	9	22	6	0	421K	FS
* Gold Creek	MT	LNF	160	---	0	8/15	105	---	2	0	0	0	25K	FS
Rough Creek	ID	NPF	2,600	0	60	7/19	325	78	8	9	6	0	1.9M	FS

Eastern Great Basin Area (PL 2)

New fires: 40
New large fires: 3
Uncontained large fires: 5
Type 2 IMTs committed: 1

Pine Creek, Idaho Department of Lands. IMT 2 (Kidd). Started on Forest Service land seven miles southwest of Idaho City, ID. Timber, brush and grass. Running fire with short-range spotting. Structures threatened. Road closures in effect.

* **Sunk**, Boise District, BLM. Six miles southwest of Murphy, ID. Juniper, brush and grass. Running fire. Structures threatened.

* **Browns Gulch**, Twin Falls District, BLM. Five miles south of Hammett, ID. Grass. Wind driven fire with spotting. Structures threatened.

* **Horse Butte 2**, Twin Falls District, BLM. Thirty miles west of Roseworth, ID. Brush and grass. Wind driven fire.

Papoose, Salmon-Challis NF. Previously reported incident. Forty miles west of Salmon, ID. Brush and grass. Active fire behavior. Last report unless significant activity occurs.

Sinbad, Manti-Lasal NF. Twenty-nine miles east of Moab, UT. Timber. No new information.

Incident Name	St	Unit	Size	Size Chge 24 Hrs	% Ctn	Est Ctn	Totl Pers	Pers Chge 24 Hrs	Crw	Eng	Heli	Strc Lost	\$\$ CTD	Origin Own
Pine Creek	ID	IDL	1,500	1,350	10	UNK	231	113	9	23	2	0	200K	BOF
* Sunk	ID	BOD	1,000	---	10	UNK	80	---	1	7	1	0	20K	BLM
* Browns Gulch	ID	TFD	500	---	10	7/17	19	---	0	4	0	0	75K	BLM
* Horse Butte 2	ID	TFD	2,500	---	10	7/18	41	---	0	7	1	0	10K	BLM
Papoose	ID	SCF	4,500	---	N/A	N/A	39	---	1	0	1	0	250K	FS
Sinbad	UT	MLF	438	---	75	UNK	30	---	1	0	1	0	775K	FS

Alaska Area (PL 3)

New fires: 5
New large fires: 0
Uncontained large fires: 3
Type 2 IMTs committed: 1

Stuart Creek #2, Military Zone, Alaska Fire Service. IMT 2 (Kurth). Twenty-five miles east of North Pole, AK. Black spruce and grass. Minimal fire behavior. Numerous structures threatened.

Moon Lake, Tok Area Forestry, Alaska DOF. Twenty miles west of Tok, AK. Black spruce. Active fire behavior with group torching. Structures threatened.

Tetlin Jct. Ridge, Tok Area Forestry, Alaska DOF. Eighteen miles east of Tok, AK. Timber. Creeping and smoldering with torching. Structures threatened.

Incident Name	St	Unit	Size	Size Chge 24 Hrs	% Ctn	Est Ctn	Totl Pers	Pers Chge 24 Hrs	Crw	Eng	Heli	Strc Lost	\$\$ CTD	Origin Own
Stuart Creek #2	AK	MID	85,475	0	57	UNK	615	-58	17	14	5	4	14M	BLM
Moon Lake	AK	TAS	17,945	150	10	8/1	130	4	4	0	2	0	4.5M	ST
Tetlin Jct. Ridge	AK	TAS	6,760	0	30	8/1	21	0	1	0	0	0	2.2M	ST

Western Great Basin Area (PL 2)

New fires: 9
 New large fires: 2
 Uncontained large fires: 3
 Type 1 IMTs committed: 1

Carpenter 1, Humboldt-Toiyabe NF. Transfer of command from IMT 1 (Harvey) back to the local unit will occur on 7/19. One mile north of Kyle Canyon, NV. Pinyon pine and juniper. No new information.

* **Cattle Guard**, Sho-Pai Tribes. Four miles south of Owyhee, NV. Brush and grass. Wind driven fire.

* **Wieland**, Elko District, BLM. Eight miles south of Tuscarora, NV. Brush and grass. Active fire behavior.

Incident Name	St	Unit	Size	Size Chge 24 Hrs	% Ctn	Est Ctn	Totl Pers	Pers Chge 24 Hrs	Crw	Eng	Heli	Strc Lost	\$\$ CTD	Origin Own
Carpenter 1	NV	HTF	27,881	---	80	7/19	824	---	17	31	7	6	16.5M	FS
* Cattle Guard	NV	DVT	550	---	45	7/17	32	---	1	5	1	0	30K	BIA
* Wieland	NV	EKD	300	---	10	7/19	99	---	3	7	0	0	150K	BLM

Northwest Area (PL 2)

New fires: 12
 New large fires: 0
 Uncontained large fires: 1
 Type 2 IMTs committed: 1

Box Springs, Oregon DOF. IMT 2 (Thorpe). Twenty-four miles northeast of Prineville, OR. Timber, juniper and grass. Active fire behavior with torching.

Incident Name	St	Unit	Size	Size Chge 24 Hrs	% Ctn	Est Ctn	Totl Pers	Pers Chge 24 Hrs	Crw	Eng	Heli	Strc Lost	\$\$ CTD	Origin Own
Box Springs	OR	ODF	500	260	25	UNK	238	0	14	30	2	0	375K	ST

Other Fires

(As of July 12)

GACC	Fires	Cumulative Acres	Crews	Engines	Helicopters	Total Personnel
AK	26	454,138	1	0	1	25
NW	4	2,254	5	7	1	132
NO	0	0	0	0	0	0
SO	0	0	0	0	0	0
NR	0	0	0	0	0	0
EB	3	966	0	3	0	13
WB	1	475	0	0	0	18
SW	4	151,148	1	1	1	24
RM	5	1,294	1	3	0	6
EA	0	0	0	0	0	0
SA	1	304	0	1	0	14
Total	44	610,579	8	15	3	232

Predictive Services Discussion: Scattered showers and thunderstorms will develop across the Four Corners states, producing rainfall up to 0.75". Some storms could produce locally heavier amounts. Widely scattered storms will form over the Northwest, northern Great Basin, and the northern Rockies. Hot and breezy conditions will continue in California and western Great Basin. Strong storms will continue over the South, central Plains and the Gulf Coast region, producing heavy rain over Texas. Scattered thunderstorms will develop over the Upper and Mid-Mississippi Valley. In Alaska, showers and a few thunderstorms will increase across the state and temperatures will continue to cool slowly.

<http://www.predictiveservices.nifc.gov/outlooks/outlooks.htm>



“This Day in History” is a brief summary of a powerful learning opportunity. You can use this summary as a foundation and launch point for further dialogue and discussion. Apply these lessons learned to yourself, your crew, your team and your unit.

Battlement Creek Fire, Colorado – July 17th, 1976

Incident Summary: It's 1976 and western Colorado is experiencing an unusually severe fire season caused partly by unusual fuel conditions and heavy lightning activity during dry weather. A severe frost in June kills a high percentage of the leaves on Gambel oak which remain on the branches and is considered one of Colorado's most flammable fuels. 10 hour fuels are at 3-5%. A large scale high pressure weather pattern sits over western Colorado allowing for local weather to be influenced by terrain and diurnal winds averaging 10-15 mph in the afternoon with higher gusts. The weather is fair and hot with the temperatures at Grand Junction and Rifle reaching into the mid and upper 90's. A fire is reported 40 miles northeast of Grand Junction, in the Battlement Creek drainage. The fire is burning over an elevation range of 6200-8400 ft on a steep west-facing slope.

Friday July 16, 0630, two hotshot crews from the Coconino NF Arizona arrive at the Battlement Creek fire. This is the seventeenth fire of the first season for the newly formed Mormon Lake Hotshot Crew. The strategy is to prevent western and southern spread. The crews begin a major burnout of the catline (dozer line) from the rocky bluffs (Point A) at about 1615, downhill along the catline toward the Battlement Creek road at the bottom (Point C) ending about 2030. The fire makes an uphill run in oak brush burning out a large portion of the drainage (from the road east to the ridgetop) in about 20 minutes. Two “impressive” fire whirls are observed between 1600-1700. The night shift continues the burn out (Point C-D and beyond along the road) but is spotty with considerable unburned fuel remaining. Other night shift crews construct line along the ridgetop (Point E to G). Based on Friday's fire behavior, the E-G line is a crucial spot on the fire. Saturday July 17th, 0700, at morning briefing the Mormon Lake crew is assigned to burn out this section of line.

Saturday morning, July 17th - Due to a delay with the helicopter, the Mormon Lake crew does not get to the base of the rock bluff (Point E) until 1100. They are instructed to improve and burn out the line from the rocky bluff to the helispot (Point E-G). The burnout squad consisted of the crew boss, squad boss and 2 crewmembers. The rest of the crew is improving the handline down the ridgetop.

At this same time another crew is burning out in the bottom of the draw (Point C-D). The draw burns readily, uphill toward the ridge and the Mormon Lake crew. Neither crew knew of the specific location or assignment of the other.

1400 - 1/3 the way from the rock bluff to the upper helispot, there is a noticeable increase in smoke from the draw below (where the other crew had been burning). The crew boss is instructed to speed up the line improvement squad on toward the safety zone (Point G) and to narrow down and speed up his burnout on down the ridgeline to join the remainder of the crew in the safety zone when his burnout was done. Upslope winds have increased to 25-35 mph.

1425-1440 – The line improvement squad just makes it into the safety zone when the flame front hits the ridge. 200 yards back, the burnout squad radios that they are “trapped”. Their escape is blocked by heavy smoke and flames.

1440 – 1445 – The squad removes their canvas vests to cover their head and face, moistened the vests and their clothes with water from their canteens, and lays face down in the mineral soil of the fireline.

1448 – All four firefighters are very badly burned.
Three will lose their lives.

Discussion Points

The day prior to the burnover, an air tanker crashed during a retardant dropping mission on the Battlement Creek fire killing the pilot.

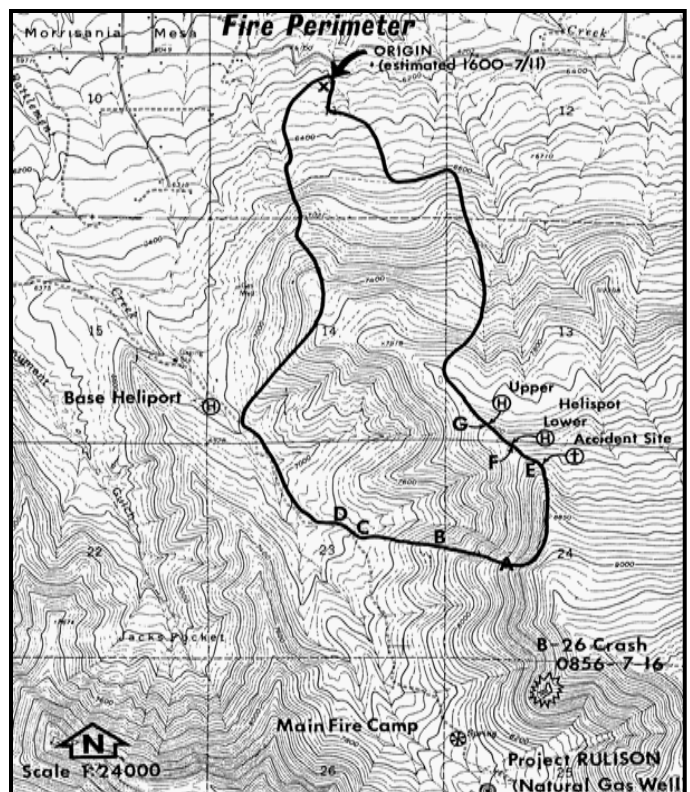
Resources [Staff Ride to the Battlement Creek Fire](#)
[Google Earth Fly Around of Battlement Creek Fire](#)
[Sequence of Events PowerPoint](#)
[Battlement Creek Fire Investigation Report](#)
[Battlement Creek dynamic PPT \(Powershow\)](#)

“This Day in History” is a collaborative project between 6 Minutes for Safety and the Wildland Fire Lessons Learned Center

- ✓ Discuss how incidents and distractions can affect our judgment and situational awareness.

The crew all wore aluminum hardhats, canvas vests, Nomex shirts and non-fire-resistant work pants. Fire shelters were not used. Fire shelters may have prevented serious burns and death at this incident. Policy on issuing and carrying shelters had not been established yet. This incident became the catalyst for the mandatory use of fire shelters and fire resistant clothing.

- ✓ **Take this opportunity to inspect, repair or replace your PPE and fire shelter if needed to ensure that it protects you as well as possible.**



Fires and Acres Yesterday

AREA		BIA	BLM	FWS	NPS	ST/OT	USFS	TOTAL
Alaska	FIRES			2		3		5
	ACRES			1,700		674		2,374
Northwest	FIRES		2			4	6	12
	ACRES		102			5	12	119
Northern California	FIRES					19		19
	ACRES					23		23
Southern California	FIRES					19	2	21
	ACRES					306	8,000	8,306
Northern Rockies	FIRES					4	4	8
	ACRES					1	2,540	2,541
Eastern Great Basin	FIRES	2	15		2	9	12	40
	ACRES	20	4,085		0	162	1,051	5,318
Western Great Basin	FIRES		6			2	1	9
	ACRES		338			551	1	890
Southwest	FIRES	2		1		2	4	9
	ACRES	1		0		0	0	1
Rocky Mountain	FIRES	1	6			5	3	15
	ACRES	0	0			0	0	0
Eastern Area	FIRES					7		7
	ACRES					14		14
Southern Area	FIRES					4		4
	ACRES					32		32
TOTAL	FIRES	5	29	3	2	78	32	149
	ACRES	21	4,525	1,700	0	1,768	11,604	19,618

Fires and Acres Year-to-Date

AREA		BIA	BLM	FWS	NPS	ST/OT	USFS	TOTAL
Alaska	FIRES	1	31	30	28	376	2	468
	ACRES	0	401,355	173,470	94,435	396,066	0	1,065,326
Northwest	FIRES	77	75	25	4	505	197	883
	ACRES	1,750	49,897	426	0	5,679	362	58,114
Northern California	FIRES	106	17		8	1,860	277	2,268
	ACRES	100	210		4	14,785	5,002	20,101
Southern California	FIRES	20	76	19	13	2,214	252	2,594
	ACRES	47	2,555	486	165	29,642	40,990	73,885
Northern Rockies	FIRES	382	17	4	4	360	160	927
	ACRES	5,453	235	1,008	2	2,960	18,406	28,064
Eastern Great Basin	FIRES	37	337	1	11	260	158	804
	ACRES	213	55,158	0	7	8,778	7,175	71,331
Western Great Basin	FIRES	5	182	3	5	50	45	290
	ACRES	24,470	65,820	1	0	878	26,993	118,162
Southwest	FIRES	460	129	25	58	463	725	1,860
	ACRES	45,789	6,725	3,313	1,797	57,546	174,645	289,815
Rocky Mountain	FIRES	396	215	12	24	460	280	1,387
	ACRES	637	4,004	501	1,072	17,216	153,229	176,659
Eastern Area	FIRES	321		35	27	4,437	239	5,059
	ACRES	7,193		994	87	32,728	1,096	42,098
Southern Area	FIRES	150		61	17	8,275	327	8,830
	ACRES	11,138		3,845	1,445	86,559	11,006	113,993
TOTAL	FIRES	1,955	1,079	215	199	19,260	2,662	25,370
	ACRES	96,790	585,959	184,044	99,014	652,837	438,904	2,057,548

Ten Year Average Fires	42,719
Ten Year Average Acres	3,441,173

*** Changes in some agency YTD acres reflect more accurate mapping or reporting adjustments. ***

Prescribed Fires and Acres Yesterday

AREA		BIA	BLM	FWS	NPS	ST/OT	USFS	TOTAL
Alaska	FIRES							0
	ACRES							0
Northwest	FIRES							0
	ACRES							0
Northern California	FIRES							0
	ACRES							0
Southern California	FIRES							0
	ACRES							0
Northern Rockies	FIRES							0
	ACRES							0
Eastern Great Basin	FIRES							0
	ACRES							0
Western Great Basin	FIRES							0
	ACRES							0
Southwest	FIRES							0
	ACRES							0
Rocky Mountain	FIRES					1		1
	ACRES					0		0
Eastern Area	FIRES							0
	ACRES							0
Southern Area	FIRES						3	3
	ACRES						1,745	1,745
TOTAL	FIRES	0	0	0	0	1	3	4
	ACRES	0	0	0	0	0	1,745	1,745

Prescribed Fires and Acres Year-to-Date

AREA		BIA	BLM	FWS	NPS	ST/OT	USFS	TOTAL
Alaska	FIRES			1	2	13		16
	ACRES			5	22	5,150		5,177
Northwest	FIRES	7	37	9	3		136	192
	ACRES	2,066	9,043	449	67		28,883	40,508
Northern California	FIRES	2	12	16	21		125	176
	ACRES	35	780	15,998	254		5,472	22,539
Southern California	FIRES		4	5	4	2	139	154
	ACRES		37	603	298	33	4,873	5,844
Northern Rockies	FIRES	11	11	24	2	94	145	287
	ACRES	1,583	2,742	6,747	156	1,085	9,741	22,054
Eastern Great Basin	FIRES	4	18	1	5	21	43	92
	ACRES	696	1,354	1	693	1,357	10,921	15,022
Western Great Basin	FIRES		2	1		12	7	22
	ACRES		24	35		103	300	462
Southwest	FIRES	17	19	5	1		71	113
	ACRES	19,319	11,472	1,372	10		16,858	49,031
Rocky Mountain	FIRES	12	37	33	10	36	94	222
	ACRES	1,691	3,317	3,956	616	5,090	24,916	39,586
Eastern Area	FIRES	20		238	48	689	152	1,147
	ACRES	23,148		30,751	4,784	31,099	15,150	104,932
Southern Area	FIRES	50		97	19	10,386	877	11,429
	ACRES	14,298		47,550	22,022	562,487	847,054	1,493,411
TOTAL	FIRES	123	140	430	115	11,253	1,789	13,850
	ACRES	62,836	28,769	107,467	28,922	606,404	964,168	1,798,566

*** Changes in some agency YTD acres reflect more accurate mapping or reporting adjustments. ***

Additional wildfire information is available through the Geographic Areas at <http://gacc.nifc.gov/>.

Canada Fires and Hectares

Provinces	Fires Yesterday	Hectares Yesterday	Fires Year-To-Date	Hectares Year-To-Date
British Columbia	6	42	430	5,410
Yukon Territory	1	16,800	126	147,559
Alberta	2	9	811	18,987
Northwest Territory	0	0	208	205,436
Saskatchewan	0	0	253	42,989
Manitoba	3	3,002	265	548,627
Ontario	7	260	389	39,966
Quebec	5	5,809	407	1,499,517
Newfoundland	2	11	78	30,244
New Brunswick	9	82	331	857
Nova Scotia	0	0	146	301
Prince Edward Island	0	0	0	0
National Parks	0	0	50	62,157
Total	35	26,014	3,494	2,602,050

This report contains information derived from the National Fire and Aviation Management Web Applications (FAMWEB) system and other sources to provide relative information about emerging and ongoing incident activity. This information is considered operational in nature, is subject to correction, and therefore may not match official year-to-date agency records.

**** National Interagency Coordination Center ****