

**National Interagency Coordination Center
Incident Management Situation Report
Wednesday, May 28, 2014 – 0530 MT
National Preparedness Level 2**

National Fire Activity

Initial attack activity: Light (146 new fires)
 New large fires: 4 (*)
 Large fires contained: 2
 Uncontained large fires: ** 9
 Area Command Teams committed: 0
 NIMOs committed: 0
 Type 1 IMTs committed: 2
 Type 2 IMTs committed: 1

** Uncontained large fires include only fires being managed under a full suppression strategy.

[Link](#) to Geographic Area daily reports.

Alaska Area (PL 3)

New fires: 6
 New large fires: 0
 Uncontained large fires: 1
 Type 2 IMTs committed 1

Funny River, Kenai-Kodiak Area, Alaska DOF. IMT 2 (Kurth). Started on FWS land five miles southwest of Soldotna, AK. Black spruce and hardwood litter. Active fire behavior. Numerous structures threatened. Evacuations in effect. Precipitation occurred over the fire area yesterday.

Incident Name	St	Unit	Size	Size Chge 24 Hrs	% Ctn	Est Ctn	Totl Pers	Pers Chge 24 Hrs	Crw	Eng	Heli	Strc Lost	\$\$ CTD	Origin Own
Funny River	AK	KKS	183,295	7,226	30	UNK	713	43	25	19	7	6	3.8M	FWS
Tyonek	AK	MSS	1,906	0	100	---	112	-84	3	0	0	5	2.5M	ST

MSS – Mat-Su Area, Alaska DOF

Southwest Area (PL 3)

New fires: 9
 New large fires: 0
 Uncontained large fires: 2
 Type 1 IMTs committed 1

Slide, Coconino NF. IMT 1 (Sciaccia). Six miles north of Sedona, AZ. Timber. Interior burning. Numerous structures threatened. Evacuations in effect.

Spring, San Carlos Agency, BIA. Eighteen miles northeast of San Carlos, AZ. Timber and grass. Moderate fire behavior.

Skunk, San Carlos Agency, BIA. Previously reported incident. Twenty-seven miles east of San Carlos, AZ. Timber, juniper and grass. Moderate fire behavior. Last report unless significant activity occurs.

Incident Name	St	Unit	Size	Size Chge 24 Hrs	% Ctn	Est Ctn	Totl Pers	Pers Chge 24 Hrs	Crw	Eng	Heli	Strc Lost	\$\$ CTD	Origin Own
Slide	AZ	COF	20,369	1,869	45	5/31	884	-197	22	29	9	0	7.1M	FS
Spring	AZ	SCA	740	290	15	5/29	17	0	0	4	0	0	27K	BIA
Skunk	AZ	SCA	44,493	1,356	N/A	N/A	141	-44	3	5	1	0	1.6M	BIA

Southern California Area (PL 2)

New fires: 3
 New large fires: 0
 Uncontained large fires: 1
 Type 1 IMTs committed 1

Hunter, Merced-Mariposa Unit, Cal Fire. Cal Fire IMT 1 (Estes). Five miles south of Coulterville, CA. Chaparral. Moderate fire behavior. Numerous residences threatened. Evacuations in effect.

Incident Name	St	Unit	Size	Size Chge 24 Hrs	% Ctn	Est Ctn	Totl Pers	Pers Chge 24 Hrs	Crw	Eng	Heli	Strc Lost	\$\$ CTD	Origin Own
Hunter	CA	MMU	1,300	650	20	6/2	671	195	22	83	4	1	556K	ST

Southern Area (PL 2)

New fires: 18
 New large fires: 3
 Uncontained large fires: 4

* **Junebug Complex**, Big Cypress National Preserve. Complex includes previously reported Junebug fire. Twenty-six miles southwest of Copeland, FL. Southern rough and grass. Interior smoldering.

* **360A**, National Forests in Florida. Eleven miles west of Tallahassee, FL. Southern rough. Moderate fire behavior with short-range spotting.

L 4 Cutout (50), Florida Forest Service. Twenty-seven miles southwest of Belle Glade, FL. Grass. No new information.

Highway 79, Florida Forest Service. Four miles northeast of Laguna Beach, FL. Timber. No new information. Last report unless significant activity occurs.

Incident Name	St	Unit	Size	Size Chge 24 Hrs	% Ctn	Est Ctn	Totl Pers	Pers Chge 24 Hrs	Crw	Eng	Heli	Strc Lost	\$\$ CTD	Origin Own
* Junebug Complex	FL	BCP	719	---	75	UNK	64	---	0	19	3	0	325K	NPS
* 360A	FL	FNF	500	---	90	5/28	11	---	0	3	1	0	10K	FS
L 4 Cutout (50)	FL	FLS	10,000	---	55	UNK	1	---	0	1	0	0	NR	ST
Highway 79	FL	FLS	700	---	90	UNK	10	---	0	1	0	0	NR	ST
* Old Grove	FL	FLS	312	---	100	---	3	---	0	0	0	0	NR	ST

Eastern Area (PL 1)

New fires: 50

New large fires: 1

Uncontained large fires: 1

* **Snow Fall**, Chequamegon-Nicolet NF. Five miles west of Mountain, WI. Hardwood litter. Moderate fire behavior.

Incident Name	St	Unit	Size	Size Chge 24 Hrs	% Ctn	Est Ctn	Totl Pers	Pers Chge 24 Hrs	Crw	Eng	Heli	Strc Lost	\$\$ CTD	Origin Own
* Snow Fall	WI	CNF	103	---	80	5/29	9	---	0	3	0	0	10K	FS

Other Fires

(As of May 23)

GACC	Fires	Cumulative Acres	Crews	Engines	Helicopters	Total Personnel
AK	1	500	2	0	2	58
NW	0	0	0	0	0	0
NO	0	0	0	0	0	0
SO	0	0	0	0	0	0
NR	0	0	0	0	0	0
EB	0	0	0	0	0	0
WB	0	0	0	0	0	0
SW	0	0	0	0	0	0
RM	0	0	0	0	0	0
EA	0	0	0	0	0	0
SA	0	0	0	0	0	0
Total	1	500	2	0	2	58

Predictive Services Discussion: Alaska will continue to see higher humidity and a chance of rain as low pressure moves east across the state. A Pacific low pressure system and associated cold front will bring scattered showers and isolated thunderstorms to the Intermountain West and Northern Rockies but warming will peak further south over California and the Southwest U.S. with dry, gusty winds. A slow-moving trough of low pressure over the Gulf Coast will result in heavy rain and thunderstorms from Texas to the lower Mississippi River Valley. A cold front will move east from the Great Lakes toward the Mid-Atlantic Coast with much cooler temperatures.

<http://www.predictiveservices.nifc.gov/outlooks/outlooks.htm>



HAZARD TREE FELLING TIPS 1

Felling Safety Category

Felling a hazard tree requires accurate risk assessment and complexity analysis, and demands the sawyer's full situational awareness. In all cases, remember to establish and maintain a secure felling area.

Do not bypass hazard trees without taking some action such as felling or establishing a No-Work-Zone.

Degree of hazard varies with tree size, species, and type/location of defect:

- Stem defects resulting in tree failure, i.e., collapse;
- Weakened sapwood resulting in loss of control when falling trees & limits solid wood for wedging;
- Overhead hazards, i.e., dead or hanging limbs falling on the faller.

Indicators of potential felling hazards:

Dead Limbs: limbs of all sizes and species with decay evident cracking, or loose hung-up limbs. Avoid working under overhead hazards.

Witches Broom: caused by mistletoe infection, limbs can grow very large and heavy (200+ lbs).

Split Trunk: cracked trunk from frost, lightning or wind. Visible evidence of advanced decay indicates serious weakness where the tree could fail.

Stem Damage: caused by windfall, scarring, fire, machine, and animal damage, as well as heart rot diseases.

Thick Sloughing Bark or Sloughing Sapwood: usually found on dead trees. Loose bark on Douglas fir or loose sapwood on wind snapped cedars can dislodge during falling.

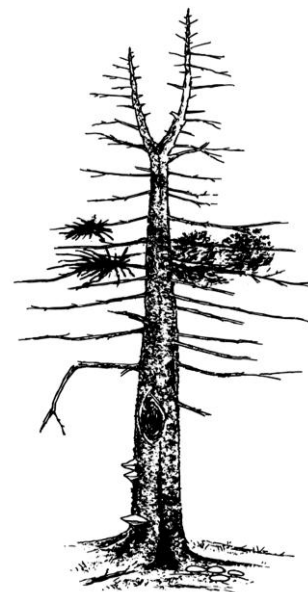
Butt and Stem Cankers: usually found on deciduous trees but can occur on Douglas fir and pine. The infected areas weaken the stem.

Fungal Fruiting Bodies or Conks: found on stems may indicate massive interior rot 1 – 2 yards above and below conk. Excessive resinosis (resin flow) also indicates heart or root diseases.

Heavy Tree Lean: may be caused by damaged roots or lifting root mats, shallow or wet soils. In some cases, the tree may have corrected itself which can be determined by looking for corrected top growth.

Root Condition: look for any ground cracks around the base of the tree, signs of decay or fungal conks on the roots.

Cat Face: look for enough solid wood to construct an effective undercut and back cut.



References:

[Hazard Tree Safety Web Page](#)

Fires and Acres Yesterday

AREA		BIA	BLM	FWS	NPS	ST/OT	USFS	TOTAL
Alaska	FIRES	0	0	0	0	5	1	6
	ACRES	0	0	0	0	19,907	0	19,907
Northwest	FIRES	1	1	0	0	15	13	30
	ACRES	1	0	0	0	93	21	115
Northern California	FIRES	0	0	0	0	12	0	12
	ACRES	0	0	0	0	4	0	4
Southern California	FIRES	0	1	2	0	0	0	3
	ACRES	0	0	2	0	0	0	2
Northern Rockies	FIRES	0	0	0	0	3	2	5
	ACRES	0	0	0	0	1	0	1
Eastern Great Basin	FIRES	1	2	0	0	2	2	7
	ACRES	105	0	0	0	0	0	105
Western Great Basin	FIRES	0	0	0	0	0	2	2
	ACRES	0	0	0	0	0	0	0
Southwest	FIRES	3	1	0	1	0	4	9
	ACRES	2,118	0	0	300	0	26	2,444
Rocky Mountain	FIRES	0	1	0	0	1	2	4
	ACRES	0	0	0	0	0	0	0
Eastern Area	FIRES	34	0	0	0	16	0	50
	ACRES	79	0	0	0	35	0	114
Southern Area	FIRES	0	0	0	0	15	3	18
	ACRES	0	0	0	0	76	501	577
TOTAL	FIRES	39	6	2	1	69	29	146
	ACRES	2,303	0	2	300	20,116	548	23,269

Fires and Acres Year-to-Date

AREA		BIA	BLM	FWS	NPS	ST/OT	USFS	TOTAL
Alaska	FIRES	0	10	0	0	159	9	178
	ACRES	0	566	0	0	178,103	5	178,674
Northwest	FIRES	30	14	14	0	93	50	201
	ACRES	1,044	20	24	0	286	72	1,446
Northern California	FIRES	0	2	2	0	857	82	943
	ACRES	0	34	17	0	1,428	1,013	2,492
Southern California	FIRES	20	26	8	5	992	148	1,199
	ACRES	223	34	60	3	24,614	4,634	29,568
Northern Rockies	FIRES	265	10	2	0	114	39	430
	ACRES	2,736	224	10	0	2,094	94	5,158
Eastern Great Basin	FIRES	8	36	0	0	84	21	149
	ACRES	121	138	0	0	529	5	793
Western Great Basin	FIRES	1	36	1	4	14	9	65
	ACRES	15	45	0	1	63	729	853
Southwest	FIRES	313	65	2	16	293	189	878
	ACRES	54,589	1,181	43	318	11,103	23,916	91,150
Rocky Mountain	FIRES	182	25	19	3	190	21	440
	ACRES	1,936	47	1,160	2,095	28,421	31	33,690
Eastern Area	FIRES	398	0	36	21	3,915	240	4,610
	ACRES	590	0	1,413	182	31,443	4,834	38,462
Southern Area	FIRES	413	0	40	26	13,341	426	14,246
	ACRES	113,265	0	2,886	282	184,938	26,354	327,725
TOTAL	FIRES	1,630	224	124	75	20,052	1,234	23,339
	ACRES	174,519	2,289	5,613	2,881	463,022	61,687	710,011

Ten Year Average Fires	28,631
Ten Year Average Acres	1,139,433

*** Changes in some agency YTD acres reflect more accurate mapping or reporting adjustments. ***

Prescribed Fires and Acres Yesterday

AREA		BIA	BLM	FWS	NPS	ST/OT	USFS	TOTAL
Alaska	FIRES	0	0	0	0	0	0	0
	ACRES	0	0	0	0	0	0	0
Northwest	FIRES	0	0	0	0	0	0	0
	ACRES	0	0	0	0	0	16	16
Northern California	FIRES	0	0	0	0	0	0	0
	ACRES	0	0	0	0	0	0	0
Southern California	FIRES	0	0	0	0	0	0	0
	ACRES	0	0	0	0	0	0	0
Northern Rockies	FIRES	0	0	0	0	0	0	0
	ACRES	0	0	0	0	0	0	0
Eastern Great Basin	FIRES	0	0	0	0	0	0	0
	ACRES	0	0	0	0	0	100	100
Western Great Basin	FIRES	0	0	0	0	0	0	0
	ACRES	0	0	0	0	0	0	0
Southwest	FIRES	0	0	0	0	0	0	0
	ACRES	0	0	0	0	0	0	0
Rocky Mountain	FIRES	0	0	0	0	0	0	0
	ACRES	0	0	0	0	0	0	0
Eastern Area	FIRES	1	0	2	0	3	0	6
	ACRES	66	0	1,123	0	122	0	1,311
Southern Area	FIRES	0	0	0	0	40	1	41
	ACRES	0	0	0	0	1,286	557	1,843
TOTAL	FIRES	1	0	2	0	43	1	47
	ACRES	66	0	1,123	0	1,408	673	3,270

Prescribed Fires and Acres Year-to-Date

AREA		BIA	BLM	FWS	NPS	ST/OT	USFS	TOTAL
Alaska	FIRES	0	7	0	0	0	0	7
	ACRES	0	59,591	0	0	0	0	59,591
Northwest	FIRES	7	43	4	2	0	143	199
	ACRES	1,141	9,045	2,780	23	0	17,116	30,105
Northern California	FIRES	0	3	9	9	0	127	148
	ACRES	0	135	7,198	60	0	5,925	13,318
Southern California	FIRES	2	5	3	4	0	71	85
	ACRES	9	277	191	301	0	2,082	2,860
Northern Rockies	FIRES	9	19	40	4	6	99	177
	ACRES	180	8,020	9,448	3,253	193	14,400	35,494
Eastern Great Basin	FIRES	3	15	5	7	26	53	109
	ACRES	355	4,057	2,184	57	502	14,935	22,090
Western Great Basin	FIRES	0	2	0	0	7	3	12
	ACRES	0	476	0	0	147	216	839
Southwest	FIRES	3	14	4	0	1	43	65
	ACRES	1,600	12,892	96	0	75	17,194	31,857
Rocky Mountain	FIRES	14	35	49	14	64	72	248
	ACRES	1,591	2,731	13,430	383	2,337	10,173	30,645
Eastern Area	FIRES	51	0	264	27	1,050	152	1,544
	ACRES	58,318	0	41,120	4,728	63,919	63,124	231,209
Southern Area	FIRES	82	0	138	23	6,898	850	7,991
	ACRES	15,858	0	45,930	15,863	355,357	871,205	1,304,213
TOTAL	FIRES	171	143	516	90	8,052	1,613	10,585
	ACRES	79,052	97,224	122,377	24,668	422,530	1,016,370	1,762,221

*** Changes in some agency YTD acres reflect more accurate mapping or reporting adjustments. ***

Additional wildfire information is available through the Geographic Areas at <http://gacc.nifc.gov/>.

Canada Fires and Hectares

Provinces	Fires Yesterday	Hectares Yesterday	Fires Year-To-Date	Hectares Year-To-Date
British Columbia	2	0	185	981
Yukon Territory	0	0	5	1
Alberta	2	1	419	701
Northwest Territory	2	76	4	76
Saskatchewan	4	3,250	136	13,493
Manitoba	2	0	40	949
Ontario	2	1	40	86
Quebec	2	75	61	1,913
Newfoundland	0	0	21	82
New Brunswick	0	0	111	86
Nova Scotia	1	5	95	435
Prince Edward Island	0	0	0	0
National Parks	0	0	5	2
Total	17	3,408	1,122	18,804

This report contains information derived from the National Fire and Aviation Management Web Applications (FAMWEB) system and other sources to provide relative information about emerging and ongoing incident activity. This information is considered operational in nature, is subject to change, and therefore may not match official year-to-date agency records.

**** National Interagency Coordination Center ****