

**National Interagency Coordination Center
Incident Management Situation Report
Friday, June 26, 2020 – 0730 MT
National Preparedness Level 3**

National Fire Activity:

Initial attack activity:	Light (99 new fires)
New large incidents:	7
Large fires contained:	7
Uncontained large fires:***	20
Area Command teams committed:	0
NIMOs committed:	1
Type 1 IMTs committed:	2
Type 2 IMTs committed:	2

Nationally, there are 19 large fires being managed under a strategy other than full suppression.

*** Uncontained large fires include only fires being managed under a full suppression strategy.

[Link](#) to Geographic Area daily reports.

[Link](#) to Understanding the IMSR.

NIMO (Houseman) has been assigned to COVID-19 support at Forest Service headquarters in Washington D.C.

Active Incident Resource Summary						
GACC	Incidents	Cumulative Acres	Crews	Engines	Helicopters	Total Personnel
AICC	3	12,510	6	0	1	174
NWCC	1	948	0	0	0	2
ONCC	2	1,151	0	2	0	5
OSCC	4	4,826	3	9	0	95
NRCC	0	1,073	0	0	0	0
GBCC	4	12,568	11	21	5	466
SWCC	11	438,348	60	204	30	3,324
RMCC	6	5,641	11	26	3	533
EACC	2	118	0	6	1	30
SACC	10	11,192	0	6	0	37
Total	43	488,375	91	274	40	4,666

Southwest Area (PL 4)

New fires:	18
New large incidents:	0
Uncontained large fires:	9
Type 1 IMTs committed:	2
Type 2 IMTs committed	1

Bighorn, Coronado NF, USFS. IMT 1 (NR Team 1). Five miles northeast of Tucson, AZ. Chaparral, brush and timber. Active fire behavior with uphill runs, backing and short-range spotting. Numerous structures threatened. Evacuations, road, trail and area closures in effect.

Tadpole, Gila NF, USFS. Twelve miles north of Silver City, NM. Timber, brush and chaparral. Moderate fire behavior with backing and flanking. Structures threatened. Road, trail and area closures in effect.

Bringham, Apache-Sitgreaves NF, USFS. Twenty-two miles north of Morenci, AZ. Brush, short grass and timber. Moderate fire behavior with flanking, backing and creeping. Structures threatened. Road, trail and area closures in effect.

Mangum, Kaibab NF, USFS. IMT 2 (SW Team 3). Twenty-four miles southeast of Fredonia, AZ. Timber, brush and short grass. Moderate fire behavior with running, flanking and torching. Numerous structures and energy infrastructure threatened. Evacuations, road, trail and area closures in effect.

Bush, Tonto NF, USFS. IMT 1 (SW Team 1). IMT is also managing the Central fire. Thirty-eight miles northeast of Mesa, AZ. Brush and tall grass. Moderate fire behavior with uphill runs, torching and smoldering. Road, trail and area closures in effect.

Central, Tonto NF, USFS. Four miles east of New River, AZ. Brush and short grass. Minimal fire behavior with smoldering. Road, trail and area closures in effect.

Vics Peak, Cibola NF, USFS. Thirty miles north of Truth or Consequences, NM. Active fire behavior with short crown runs, wind-driven runs and backing. Road, trail and area closures in effect.

Good, Gila NF, USFS. Twenty-nine miles north of Silver City, NM. Timber, brush and tall grass. Moderate fire behavior with backing, creeping and smoldering.

Aquila, Central District, Arizona DOF. One mile east of Tramonto, AZ. Chaparral, brush and short grass. No new information. Last report unless new information is received.

Incident Name	Unit	Size		%	Ctn/ Comp	Est	Personnel		Resources			Strc Lost	\$\$ CTD	Origin Own
		Acres	Chge				Total	Chge	Crw	Eng	Heli			
Bighorn	AZ-CNF	81,702	7,155	33	Ctn	7/10	1,196	124	24	87	10	0	25.2M	FS
Tadpole	NM-GNF	10,896	210	45	Ctn	7/18	92	7	4	3	1	0	3.2M	FS
Bringham	AZ-ASF	22,792	472	37	Ctn	7/31	253	35	6	7	3	2	6.3M	FS
Mangum	AZ-KNF	71,627	0	46	Ctn	7/24	652	53	12	31	5	4	15.1M	FS
Bush	AZ-TNF	189,470	2,503	90	Ctn	6/30	364	-53	2	13	8	0	9.8M	FS
Central	AZ-TNF	4,499	0	80	Ctn	6/30	72	-63	2	3	0	0	1.6M	FS
Vics Peak	NM-CIF	6,912	183	5	Ctn	7/31	164	6	5	7	2	1	1M	FS
Good	NM-GNF	14,100	880	39	Ctn	7/15	1	0	0	0	0	0	2.2M	FS
Aquila	AZ-A4S	899	---	0	Ctn	6/26	517	---	5	51	1	1	1.5M	ST
Airport	AZ-BAR	674	0	100	Ctn	---	5	1	0	1	0	0	25K	FWS

BAR - Buenos Aires NWR, FWS

Rocky Mountain Area (PL 2)

New fires:	9
New large incidents:	0
Uncontained large fires:	2
Type 2 IMTs committed:	1

Sand Creek, San Juan NF, USFS. IMT 2 (RM Team Black). Twenty miles northwest of Pagosa Springs, CO. Heavy slash. Minimal fire behavior with creeping and smoldering.

East Canyon, Tres Rios Field Office, BLM. Transfer of command from IMT 2 (RM Team Blue) back to local area occurred yesterday. Eighteen miles southeast of Cortez, CO. Timber and brush. Minimal fire behavior with smoldering. Structures threatened. Road closures in effect.

Incident Name	Unit	Size		%	Ctn/ Comp	Est	Personnel		Resources			Strc Lost	\$\$ CTD	Origin Own
		Acres	Chge				Total	Chge	Crw	Eng	Heli			
Sand Creek	CO-SJF	71	0	0	Ctn	8/31	248	7	6	0	1	0	1.3M	FS
East Canyon	CO-SJD	2,905	0	98	Ctn	6/29	57	0	1	4	1	0	5.7M	BLM
Mine Draw	SD-SDS	60	-90	100	Ctn	---	108	7	3	11	1	0	250K	ST

SDS – South Dakota Division of Wildland Fire

Alaska Area (PL 2)

New fires:	1
New large incidents:	5
Uncontained large fires:	1

Isom Creek, Upper Yukon Zone, BLM. Started on state land 17 miles southwest of Stevens Village, AK. Timber and brush. Moderate fire behavior with smoldering. Area closures in effect. Precipitation occurred over the fire area yesterday.

* **Bearpaw Mountain**, Tanana Zone, BLM. Started on NPS land 61 miles west of Healy, AK. Timber and tall grass. Moderate fire behavior with smoldering, creeping and group torching. Last narrative report unless significant activity occurs.

* **Tivehvnun Lake**, Upper Yukon Zone, BLM. Started on FWS land 31 miles south of Christian, AK. Timber and tall grass. Moderate fire behavior with smoldering and creeping. Last narrative report unless significant activity occurs.

Taylor Creek, Southwest Area, Alaska DOF. Previously reported incident. Seventy-eight miles southwest of Stoney River, AK. Timber and grass. Minimal fire behavior. Last narrative report unless significant activity occurs.

Titnuk Creek, Southwest Area, Alaska DOF. Previously reported incident. Ninety-seven miles south of Stoney River, AK. Timber grass and understory. Minimal fire behavior. Last report unless significant activity occurs.

* **Old Lost**, Upper Yukon Zone, BLM. Started on FWS land 22 miles northeast of Stevens Village, AK. Timber grass and understory. Minimal fire behavior with smoldering. Last narrative report unless significant activity occurs.

* **Gold Mountain**, Tanana Zone, BLM. Started on state land 23 miles northwest of Kallands, AK. Timber and tall grass. Minimal fire behavior. Last narrative report unless significant activity occurs.

Incident Name	Unit	Size		%	Ctn/ Comp	Est	Personnel		Resources			Strc Lost	\$\$ CTD	Origin Own
		Acres	Chge				Total	Chge	Crw	Eng	Heli			
Isom Creek	AK-UYD	12,180	0	70	Ctn	6/27	122	-10	4	0	1	0	9M	ST
* Bearpaw Mountain	AK-TAD	700	---	0	Comp	10/1	0	---	0	0	0	0	2K	NPS
* Tivehvn Lake	AK-UYD	829	---	0	Comp	10/1	0	---	0	0	0	0	1K	FWS
Taylor Creek	AK-SWS	13,111	1,697	0	Comp	8/31	0	0	0	0	0	0	11K	ST
Titnuk Creek	AK-SWS	4,714	1,731	0	Comp	8/31	0	0	0	0	0	0	4K	ST
* Old Lost	AK-UYD	452	---	0	Comp	10/1	0	---	0	0	0	0	2K	FWS
* Gold Mountain	AK-TAD	344	---	0	Comp	10/1	0	---	0	0	0	0	2K	ST
Izaviknek River	AK-SWS	3,525	0	100	Comp	---	0	0	0	0	0	0	4K	ST
* Kanuti River	AK-TAD	467	---	100	Comp	---	0	---	0	0	0	0	2K	BLM
Large Fires Being Managed With a Strategy Other Than Full Suppression Without a Type 1 or 2 IMT Assigned														
Ingakslugwat Hills	AK-SWS	52,250	0	0	Comp	8/1	0	0	0	0	0	0	44K	FWS
Kochilagok Hill	AK-SWS	29,322	0	0	Comp	8/1	0	0	0	0	0	0	3K	ST
Manokinak River	AK-SWS	12,133	0	0	Comp	8/1	0	0	0	0	0	0	21K	ST
Big Waldren Fork	AK-SWS	498	329	0	Comp	8/1	0	0	0	0	0	0	2K	ST
Billy Hawk Creek	AK-GAD	2,240	-85	95	Comp	9/15	0	0	0	0	0	0	6K	FWS
Wapoo Creek 2	AK-GAD	1,693	0	95	Comp	9/15	0	0	0	0	0	0	2K	ST
Tagagawik River	AK-GAD	1,006	6	0	Comp	9/30	0	0	0	0	0	0	NR	FWS
Tagagawik River 2	AK-GAD	505	-295	0	Comp	9/30	0	0	0	0	0	0	NR	BLM
Coleen	AK-UYD	830	35	0	Comp	10/1	0	0	0	0	0	0	2K	BLM
Clear Creek	AK-MID	1,285	---	0	Comp	6/30	0	---	0	0	0	0	10K	BLM
Wapoo Creek	AK-GAD	600	---	0	Comp	9/15	0	---	0	0	0	0	10K	ST
Iwaktok Hill	AK-SWS	13,030	---	0	Comp	UNK	0	---	0	0	0	0	3K	FWS

GAD – Galena Zone, BLM MID – Military Zone, BLM

Great Basin Area (PL 2)

New fires: 9
New large incidents: 2
Uncontained large fires: 4

Monarch, Carson City District, BLM. Started on BIA land 11 miles southeast of Gardnerville, NV. Timber and tall grass. Active fire behavior with torching, backing and wind-driven runs. Residences threatened.

* **Rock Path**, Richfield Field Office, BLM. Fifteen miles north of Milford, UT. Chaparral, brush and short grass. Active fire behavior with running, uphill runs and wind-driven runs.

* **Antelope**, Richfield Field Office, BLM. Fifteen miles north of Milford, UT. Brush and short grass. Active fire behavior with running, uphill runs and wind-driven runs.

Brown, Ely District, BLM. Two miles southeast of Lund, NV. Timber, brush and tall grass. Moderate fire behavior with uphill runs, short crown runs and creeping.

Incident Name	Unit	Size		%	Ctn/ Comp	Est	Personnel		Resources			Strc Lost	\$\$ CTD	Origin Own
		Acres	Chge				Total	Chge	Crw	Eng	Heli			
Monarch	NV-CCD	2,500	1,700	0	Ctn	6/27	276	166	7	8	3	0	800K	BIA
* Rock Path	UT-RID	1,200	---	2	Ctn	7/2	59	---	1	4	1	0	20K	BLM
* Antelope	UT-RID	600	---	35	Ctn	7/2	15	---	0	4	0	0	10K	BLM
Brown	NV-ELD	8,268	6,268	42	Ctn	6/30	116	13	3	5	5	0	400K	BLM

Southern California Area (PL 2)

New fires: 29
New large incidents: 0
Uncontained large fires: 2

Grade, Tulare Unit, Cal Fire. Twelve miles northwest of Woodlake, CA. Grass. Minimal fire behavior.

Ivanpah, Mojave National Preserve, NPS. Seventeen miles southeast of Cima, CA. Brush, chaparral and southern rough. Minimal fire behavior.

Incident Name	Unit	Size		%	Ctn/ Comp	Est	Personnel		Resources			Strc Lost	\$\$ CTD	Origin Own
		Acres	Chge				Total	Chge	Crw	Eng	Heli			
Grade	CA-TUU	1,050	0	95	Ctn	UNK	0	-150	0	0	0	0	800K	ST
Ivanpah	CA-MNP	1,088	0	95	Ctn	UNK	16	-39	1	1	0	0	85K	NPS

Northern Rockies Area (PL 1)

New fires: 5
New large incidents: 0
Uncontained large fires: 1

Lump Gulch, Central Land Office, Montana DNRC. Started on USFS land five miles south of Helena, MT. Timber. Minimal fire behavior with smoldering. Last report unless significant activity occurs.

Incident Name	Unit	Size		%	Ctn/ Comp	Est	Personnel		Resources			Strc Lost	\$\$ CTD	Origin Own
		Acres	Chge				Total	Chge	Crw	Eng	Heli			
Lump Gulch	MT-CES	1,073	0	85	Ctn	6/30	0	-83	0	0	0	0	860K	FS

Southern Area (PL 1)

New fires: 11
New large incidents: 0
Uncontained large fires: 0

Incident Name	Unit	Size		%	Ctn/ Comp	Est	Personnel		Resources			Strc Lost	\$\$ CTD	Origin Own
		Acres	Chge				Total	Chge	Crw	Eng	Heli			
Large Fires Being Managed With a Strategy Other Than Full Suppression Without a Type 1 or 2 IMT Assigned														
20 Mile	TX-BTP	1,090	0	50	Comp	UNK	0	-1	0	0	0	0	1K	NPS

BTP – Big Thicket NP, NPS

Eastern Area (PL 1)

New fires: 0
 New large incidents: 0
 Uncontained large fires: 1

Wilderness Island, Maine Forest Service. Started on private land 11 miles southwest of Winterville, ME.
 Minimal fire behavior with smoldering. Last report unless significant activity occurs.

Incident Name	Unit	Size		%	Ctn/ Comp	Est	Personnel		Resources			Strc Lost	\$\$ CTD	Origin Own
		Acres	Chge				Total	Chge	Crw	Eng	Heli			
Wilderness Island	ME-MES	110	4	98	Ctn	UNK	4	-10	0	0	0	0	110K	PRI

Northern California Area (PL 2)

New fires: 17
 New large incidents: 0
 Uncontained large fires: 0

Incident Name	Unit	Size		%	Ctn/ Comp	Est	Personnel		Resources			Strc Lost	\$\$ CTD	Origin Own
		Acres	Chge				Total	Chge	Crw	Eng	Heli			
S-1	CA-NOD	588	-162	100	Ctn	---	5	-56	0	1	0	0	165K	BLM
R-2	CA-NOD	563	0	100	Ctn	---	0	-22	0	1	0	0	250K	BLM

NOD – Northern California District, BLM

Northwest Area (PL 2)

New fires: 0
 New large incidents: 0
 Uncontained large fires: 0

Incident Name	Unit	Size		%	Ctn/ Comp	Est	Personnel		Resources			Strc Lost	\$\$ CTD	Origin Own
		Acres	Chge				Total	Chge	Crw	Eng	Heli			
Teller Flat 0281 OD	OR-951S	948	-52	100	Ctn	---	2	-31	0	0	0	0	32K	PRI

951S – Prineville Unit, Oregon DOF

Fires and Acres Yesterday (by Protection):

Area		BIA	BLM	FWS	NPS	ST/OT	USFS	TOTAL
Alaska Area	FIRES	0	0	0	0	1	0	1
	ACRES	0	79	0	0	0	0	79
Northwest Area	FIRES	0	0	0	0	0	0	0
	ACRES	0	0	0	0	0	0	0
Northern California Area	FIRES	0	0	0	0	13	4	17
	ACRES	0	65	0	0	8	1	74
Southern California Area	FIRES	0	2	0	1	20	6	29
	ACRES	0	12	0	1	566	1	580
Northern Rockies Area	FIRES	0	0	0	0	4	1	5
	ACRES	0	0	0	0	4	0	4
Great Basin Area	FIRES	0	4	0	0	4	1	9
	ACRES	0	9,014	0	0	189	0	9,203
Southwest Area	FIRES	14	1	0	0	1	2	18
	ACRES	31	1	0	0	0	2,087	2,119
Rocky Mountain Area	FIRES	0	2	0	0	4	3	9
	ACRES	0	0	0	0	85	0	85
Eastern Area	FIRES	0	0	0	0	0	0	0
	ACRES	0	0	0	0	0	0	0
Southern Area	FIRES	0	0	0	0	10	1	11
	ACRES	0	0	0	0	65	0	65
TOTAL FIRES:		14	9	0	1	57	18	99
TOTAL ACRES:		31	9,171	0	1	917	2,089	12,209

Fires and Acres Year-to-Date (by Protection):

Area		BIA	BLM	FWS	NPS	ST/OT	USFS	TOTAL
Alaska Area	FIRES	0	120	0	0	131	13	264
	ACRES	0	38,271	0	0	129,435	25	167,731
Northwest Area	FIRES	61	60	24	0	402	135	682
	ACRES	578	2,496	1,766	0	1,737	180	6,757
Northern California Area	FIRES	3	16	1	0	1,271	150	1,441
	ACRES	1	1,812	0	0	11,150	442	13,406
Southern California Area	FIRES	9	56	1	6	1,708	219	1,999
	ACRES	20	276	0	1,093	14,744	1,029	17,162
Northern Rockies Area	FIRES	487	9	3	0	260	91	850
	ACRES	3,342	19	763	0	14,176	358	18,658
Great Basin Area	FIRES	16	279	13	20	373	80	781
	ACRES	42	83,006	1	42	16,482	988	100,561
Southwest Area	FIRES	442	130	9	15	321	593	1,510
	ACRES	37,554	9,037	708	88	18,661	297,624	363,672
Rocky Mountain Area	FIRES	236	88	9	2	359	196	890
	ACRES	2,918	4,053	363	0	72,610	2,627	82,571
Eastern Area	FIRES	313	0	33	9	5,554	316	6,225
	ACRES	291	0	3,278	52	20,210	1,531	25,362
Southern Area	FIRES	213	86	21	29	7,964	281	8,594
	ACRES	18,277	404	3,418	31,640	220,230	22,588	296,557
TOTAL FIRES:		1,780	844	114	81	18,343	2,074	23,236
TOTAL ACRES:		63,023	139,374	10,297	32,915	519,435	327,393	1,092,436

Ten Year Average Fires (2010 – 2019 as of today)	26,046
Ten Year Average Acres (2010 – 2019 as of today)	1,765,598

***Changes in some agency YTD acres reflect more accurate mapping or reporting adjustments.

***Additional wildfire information is available through the Geographic Areas at <https://gacc.nifc.gov/>

Prescribed Fires and Acres Yesterday (by Ownership):

Area		BIA	BLM	FWS	NPS	ST/OT	USFS	TOTAL
Alaska Area	FIRES	0	0	0	0	0	0	0
	ACRES	0	0	0	0	0	0	0
Northwest Area	FIRES	0	0	0	0	0	0	0
	ACRES	0	0	0	0	0	0	0
Northern California Area	FIRES	0	0	0	0	0	0	0
	ACRES	0	0	0	0	0	0	0
Southern California Area	FIRES	0	0	0	0	0	0	0
	ACRES	0	0	0	0	0	0	0
Northern Rockies Area	FIRES	0	0	0	0	0	0	0
	ACRES	0	0	0	0	0	0	0
Great Basin Area	FIRES	0	0	0	0	0	0	0
	ACRES	0	0	0	0	0	0	0
Southwest Area	FIRES	0	0	0	0	0	0	0
	ACRES	0	0	0	0	0	0	0
Rocky Mountain Area	FIRES	0	0	0	0	0	0	0
	ACRES	0	0	0	0	0	0	0
Eastern Area	FIRES	0	0	0	0	0	0	0
	ACRES	0	0	0	0	0	0	0
Southern Area	FIRES	1	0	2	0	4	0	7
	ACRES	1	0	516	0	448	0	965
TOTAL FIRES:		1	0	2	0	4	0	7
TOTAL ACRES:		1	0	516	0	448	0	965

***Prescribed fire acres are for reference only and may not reflect the most up-to-date information.

***Official prescribed fire accomplishment reporting occurs through agency specific systems of record.

Canadian Fires and Hectares

PROVINCES	FIRES YESTERDAY	HECTARES YESTERDAY	FIRES YEAR-TO-DATE	HECTARES YEAR-TO- DATE
BRITISH COLUMBIA	0	0	177	665
YUKON TERRITORY	0	0	15	14,926
ALBERTA	4	2	339	753,560
NORTHWEST TERRITORY	2	15	22	4,724
SASKATCHEWAN	1	0	69	42,076
MANITOBA	1	18	73	45,243
ONTARIO	1	0	161	908
QUEBEC	3	3	506	63,428
NEWFOUNDLAND	0	0	31	45
NEW BRUNSWICK	4	1	292	1,132
NOVA SCOTIA	1	0	108	642
PRINCE EDWARD ISLAND	0	0	9	8
NATIONAL PARKS	0	0	19	5
TOTALS	17	39	1,821	927,360

*1 Hectare = 2.47 Acres

Predictive Services Discussion: A weak area of high pressure will develop over the Inland West and will produce a thermal trough over the southern Great Basin that will extend from the Arizona Strip northwest into the Modoc in California. Increasing heat will develop. Breezy winds will accompany the heat across northern California as a very weak disturbance moves southeast into the state late in the afternoon. Isolated storms will be possible along the Continental Divide as a trough of low pressure begins to depart the region. In Alaska, scattered showers and storms will continue across the eastern interior as a cold front slowly pushes east across the state. New England will continue to receive much needed moisture from showers and storms as a cold front moves north across the region.

<http://www.predictiveservices.nifc.gov/outlooks/outlooks.htm>



This Day in History is a brief summary of a powerful learning opportunity and is not intended to second guess or be judgmental of decisions and actions. Put yourself in the following situation as if you do not know what the outcome will be. What are the conditions? What are you thinking? What are YOU doing?

Dude Fire

Incident Summary: June of 1990 will long be remembered as one of the hottest months in Arizona history. On June 26th the temperature rose to record temperatures of 122° F in Phoenix and to 106° F in Payson. In addition to the extreme temperatures, Arizona had been in a severe 3-year drought, the combination producing a critically high fire danger throughout the state, especially the Mogollon Rim country and the Tonto National Forest north of Payson. Fuels in the area are primarily ponderosa pine with an understory of mixed oak, manzanita, needle and leaf litter, and scattered large (greater than 6-inch diameter) dead logs. Much of the understory brush is heavily draped with very dry pine needles. Live fuel moisture of the manzanita and oak is very low (76%), fine dead fuel moisture is 3% and 8% for larger dead fuels.

At 1230 June 25th, a dry lightning storm starts a fire under the Mogollon Rim on the Payson Ranger District, Tonto NF Arizona. The fire is on a steep SW facing slope at 6400 ft. elevation. At 1330, the fire is estimated from the air at 5 acres, 50 acres one hour later, and over 100 acres by 1615 with a spot fire one mile east of the main fire. By 1800 a Type II IMT has arrived and a Type I IMT and 18 crews had been ordered. The fire is being pushed by brisk down canyon winds and is 1900 acres by 0500 on June 26th and is threatening the forest subdivision of Bonita Creek Estates. A convection column, aided by combustion, begins forming over the fire by 1000. The column continues to grow and becomes a fully mature thunderstorm by 1400. Radio and frequency issues are causing a breakdown in communication between the crews and the overhead team. The teams are transitioning mid-shift resulting in confusion between the crews and supervision. The thunderstorm begins to decay creating strong downbursts channeled by the topography, causing dramatic down and across slope fire spread on nearly all sides of the fire. Members of the Perryville Fire Crew will not be able to escape from the fast and erratic fire spread. **Five are injured. Six will die on the fireline.**

Discussion Points:

The fire behavior indicator system “Look Up, Look Down, Look Around” was developed in response to this tragic fire.

- Using Look Up, Down and Around (Operational Engagement section, green) in the [Incident Response Pocket Guide \(IRPG\), PMS 461](#), what indicators are most significant in your area to let you know the fire behavior may become problematic?

The Haines Index, a measure of the atmosphere’s effect on a fire’s growth potential, was adopted for inclusion on Fire Weather forecasts issued by the National Weather Service.

- Review and discuss the Haines Index information (Other References section, white) in the [IRPG](#).

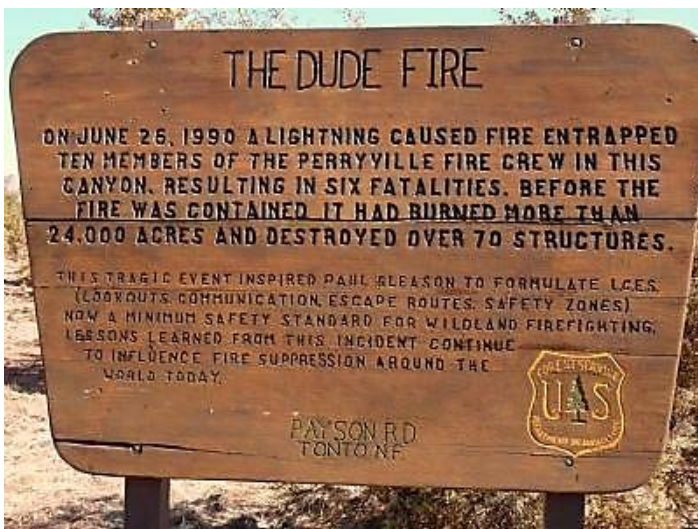
In his paper “[LCES and Other Thoughts](#)”, Paul Gleason writes about kneeling next to one of the Perryville firefighters and of his promise to help end needless fatalities and near misses.

Review LCES in the [IRPG](#) (Operational Engagement section, green) and discuss how you and your crew establish and maintain LCES.

- Discuss the difference between establishing LCES and maintaining LCES.
- What are common barriers to maintaining LCES?

We honor these firefighters today by learning about the lessons they learned the hard way and by using this tragic event as a tool to keep ourselves and our crews safe on the fireline. Use the following resources:

- [Dude Fire Staff Ride](#)
- [Fire Investigation Report](#)
- [Dude Fire - Fire Weather Behavior](#)
- ["LCES and Other Thoughts" by Paul Gleason](#)



Have an idea? Have feedback? Share it.

[EMAIL](#) | [Facebook](#) | **MAIL:** 6 Minutes for Safety Subcommittee • 3833 S. Development Ave • Boise, ID 83705
| **FAX:** 208-387-5250