

Fuels and Fire Behavior Advisory

Central & Southern UT / AZ Strip / West Slope CO / Southwest WY
Valid July 29 – August 12, 2025



Subject: Critically dry fuel conditions are present across Central/Southern Utah and the Arizona Strip extending into the Colorado West Slope and southwest Wyoming due to the ongoing drought and recent hot and dry weather which has resulted in extreme fire behavior. Continued warm /dry weather will keep the potential for extreme fire behavior elevated until significant precipitation arrives.

Discussion: After a dry winter with minimal snowpack fuel moistures are well below normal, and much of the region is under severe to extreme drought. A handful of major wildfires are currently burning in the area: the **Deer Creek Fire** in the La Sal Mountains has burned over 17,000 acres. The **White Sage Fire** on the AZ Strip is over 59,000 acres and the **Monroe Fire**, near Richfield UT, has consumed 32,000 acres. Further east in Colorado acres has been less with the **South Rim Fire** burning 4,232 acres, and the **Turner Gulch Fire** burning 19,139 acres. Extreme fire behavior marked by rapid spread, torching, and resistance to control is being driven by critically dry 1000-hour fuels, and drought-stressed brush and trees. As heat intensifies and fuel moistures decline further, fire potential will remain elevated across the area.

Difference from Normal Conditions: Fuel conditions across the region are significantly drier and more volatile than normal for late-July. Prolonged heat, low humidity, and steady winds have rapidly dried out live and dead fuels—especially native grasses, brush, sagebrush, and 1000-hour fuels. In parts of southern Utah moisture levels are nearing or exceeding historic lows, triggering fire behavior seen only during the driest and most severe fire seasons.

Concerns to Firefighters and the Public: Dry fuels and rising temperatures are creating conditions for fast-moving, unpredictable wildfires. Firefighters face limited suppression options, while communities near wildland-urban areas are at heightened risk. Even routine activities can spark new ignitions. Extreme caution is critical as fire danger escalates.

Mitigation Measures:

Low Fuel Moistures (Live & Dead):

- Monitor conditions closely; anticipate high resistance to control and intense fire behavior.
- Plan for longer operations and use indirect tactics as needed.

Heavy Fuels & Sagebrush Consumption:

- Be prepared for torching and spotting; increase lookouts and contingency lines.
- Avoid direct attack in volatile brush, especially on slopes.

Drought-Stressed Areas:

- Treat all vegetation as highly flammable; spotting distances may increase.
- Adjust escape routes and safety zones accordingly.

Public Risk:

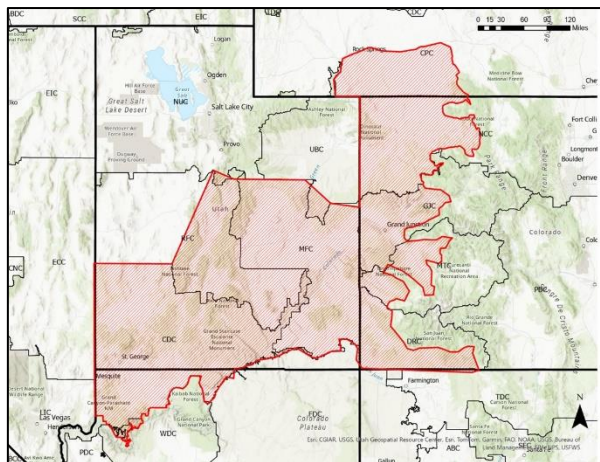
- Boost prevention messaging and patrol high-risk areas.
- Enforce fire restrictions, especially in WUI zones.

Weather & Heat:

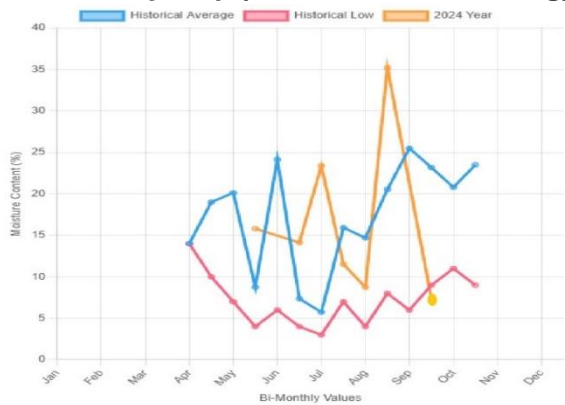
- Plan for extended shifts and heat exposure—rotate crews and hydrate often.
- Use updated forecasts to anticipate critical fire behavior periods.

Area of Concern: BLM: Color Country, Canyon Country, Arizona Strip and Paria River Districts. USFS: Dixie, Fishlake and Manti National Forests, National Park Service: Zion and Bryce Canyon National Parks, West Slope of CO and Southwest WY below 8,000 feet. (See map on page 2)

Issued By: Great Basin & Rocky Mountain Predictive Service Units and Local Interagency Fire Planners and Fuel Specialists



Advisory Map (Red Hatched Shading)



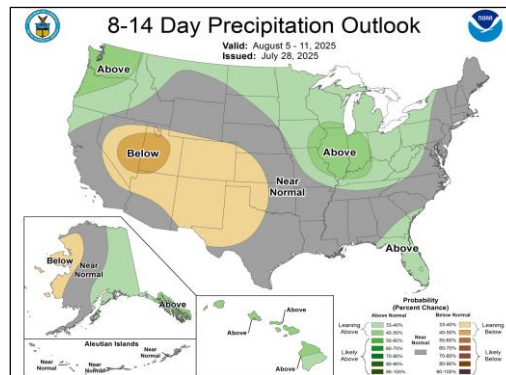
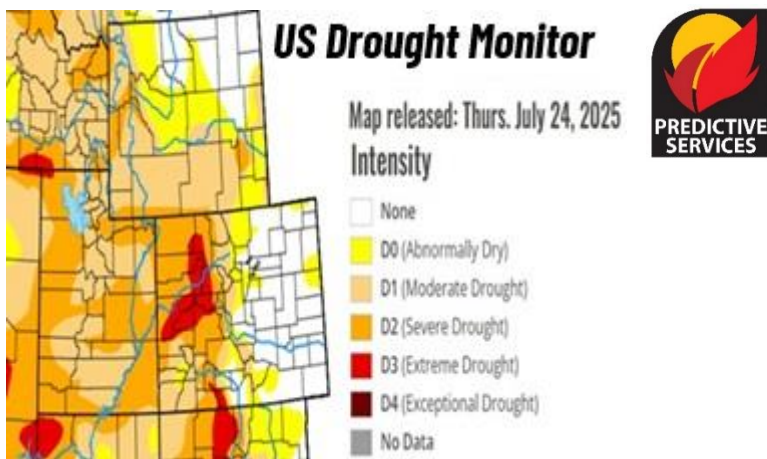
Dead Fuel Moisture near the Deer Creek Fire



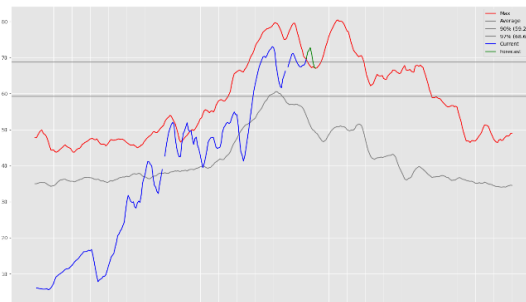
Plume on Deer Creek Fire – UT/CO Border



Turner Gulch in Western CO



White Sage Fire Extreme Fire Behavior – Grand Canyon



ERCs above 97th Percentile on CO West Slope