

Fuels and Fire Behavior Advisory

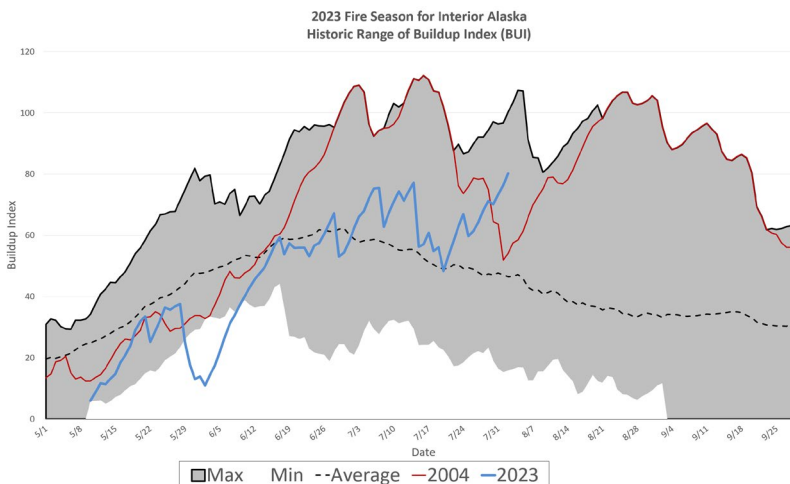
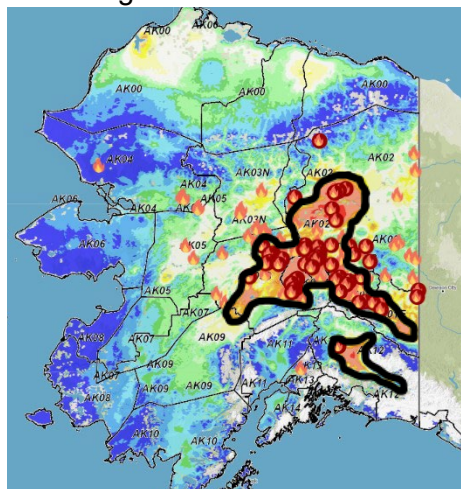
Central Interior, Eastern Interior and Copper River Basin

Valid: August 4 – August 18, 2023

Subject: Exceptional landscape flammability and widespread ongoing large fire growth.

Discussion: The Buildup Index (BUI) is the best indicator of seasonal severity and overall flammability of fuels in Alaska. It represents deeper drying in the duff layers and greater fuel availability. Large fire growth typically occurs from mid-June to mid-July when long days and rapid drying can produce elevated BUIs. The delayed onset of season-ending rains has resulted in BUI far above average for this time of year. There are already numerous fires near core population areas. New starts continue to be discovered in these areas and are resistant to containment.

Difference from normal conditions: The attached graph shows the current 2023 BUI trend for the Interior of Alaska compared to other busy fire seasons. This fire season started below average, but July was abnormally dry and the last week of July saw high temperatures with numerous lightning ignitions. While most seasons have seen wetting rains by this time, BUI remains elevated with no significant precipitation expected for this area in the forecast period. Multiple days of wetting rain adding up to more than one inch will be needed for lasting relief.



Concerns to Firefighters and the Public:

- Spruce stands are extremely flammable, will ignite readily, may exhibit rates of spread more than one mile per hour, spot prolifically up to ¼ mile or more, and exhibit intense crown fire behavior.
- Temperatures above 80 degrees and RH at or below 30% are important thresholds for rapid spread and crown fire behavior. Strong winds are not required for large fire growth in these conditions but forecast for the area includes sustained strong winds.
- Long-term drying has stressed green fuels may allow spread into riparian areas and less flammable hardwood forests. With continued drying, these fuel types may no longer be barriers to fire spread.

Mitigation Measures:

- Understand the triggers and thresholds for problem fire behavior.
- Monitor forecasts and indices to anticipate areas of increased flammability and extreme fire behavior.
- Maintain clear communications when working around active fires.

Area of Concern: Central and Eastern Interior to include the Yukon Flats, Tanana Valley and Copper River Basin.

Issued By: Alaska Interagency Coordination Center Predictive Services