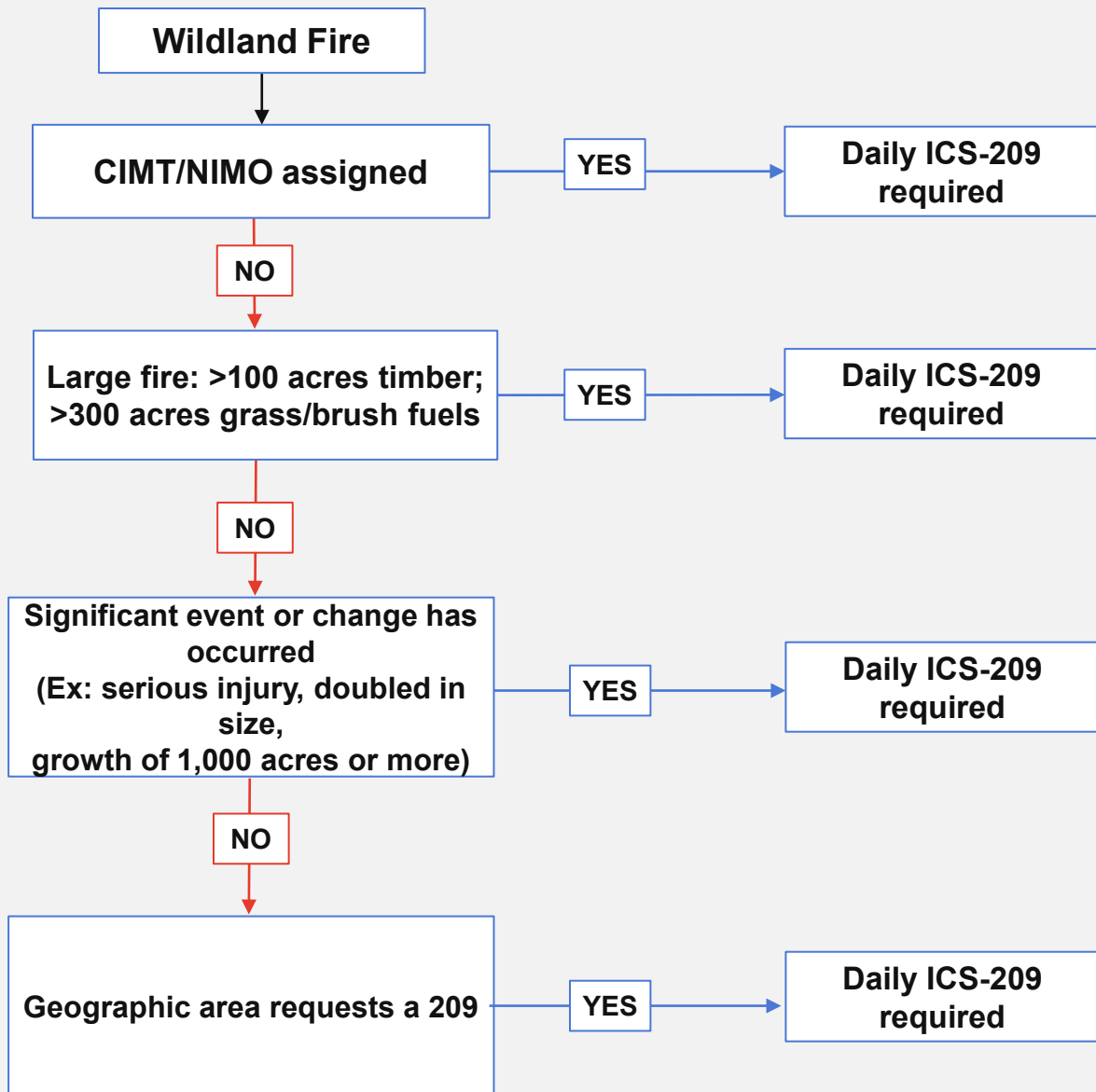


When to Report Wildland Fire Incidents with an ICS-209

Daily ICS-209 is required for any incident that meets at least one criterion below.



A final 209 shall be completed at containment and/or control.

A 209 shall be submit daily if the total acreage of a complex meets large fire criteria.

Disclaimer: Submit 209s weekly when incidents have reached at least 90% containment with no growth for several days and low commitment of resources (less than 100 personnel).