



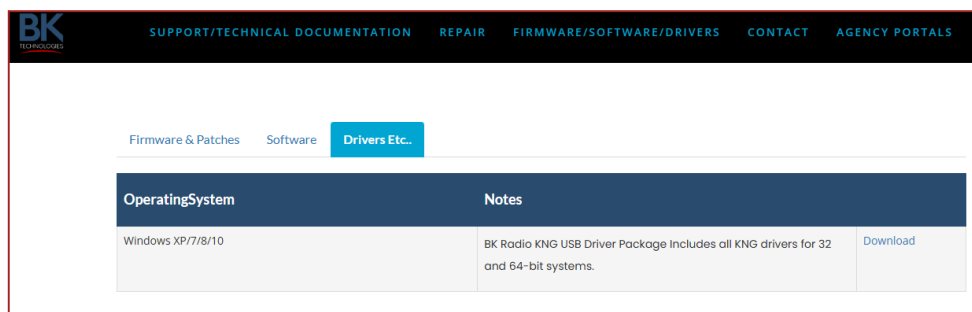
# Simplified BK Driver Install Instructions

## Download the BK Driver

[https://www.bktechnologies.com/service-portal/products/BK\\_KAA0733](https://www.bktechnologies.com/service-portal/products/BK_KAA0733)

- > <https://www.bktechnologies.com/service-portal/>
- > click "**Firmware/Software/Drivers**" at the top toolbar (*See Figure 1*)
- > select "**KNG Radios**"
- > select "**KNG2-P Series**" under Portables
- > select "**Drivers Etc...**" tab
- > select "**Download**" to download the current drivers
- > Save file to desired location

*Note: The driver will download as a zipped folder.*



*Figure 1*

## Unzip the driver folder.

- > Right click the downloaded file and select extract all.

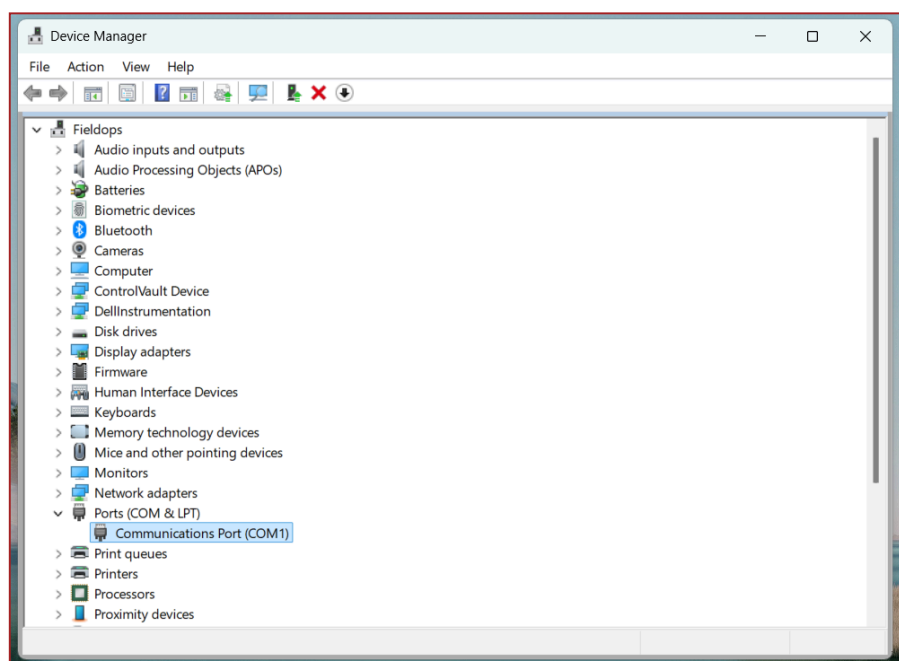
*Note: Extract all to a desired location.*

## Connect Radio to Laptop/Computer

- > Using a radio programming usb cable and adapter, connect a KNG2 or BKR5000 radio to the laptop/computer usb port.

## Determine the correct USB Port

- > Open Device Manager by typing "**Device Manager**" in the Start Menu search bar and open up the app.
- > In Device Manager, scroll down to Ports (COM & LPT) and expand it.
- > Determine what USB Serial Device Com Port the radio is utilizing by disconnecting the radio usb cable and noting what COM port disappears, then reconnect the radio usb and notice what COM port appears.



*Figure 2*



# Simplified BK Driver Install Instructions

## Updating the USB Driver

- > Select the radios USB Serial Device Com port and right click it and select the properties tab.
- > In properties, click the "Driver" tab and select "Update Driver". (See Figure 3)
- > Select "Browse my computer for drivers". (See Figure 4)
- > Select "Let me pick from a list of available drivers on my computer". (See Figure 5)
- > Select "Have Disk". (See Figure 6)
- > Select "Browse" and then find the driver folder downloaded earlier and click into the "Windows 10\_RNDIS" folder.
- > Select the "RNDIS.inf" file and select "OK". (See Figure 7)
- > Select "Next".

*Note: Once driver is updated a message "windows has successfully updated driver USB Ethernet/RNDIS Gadget" should appear.*

The "RNDIS" driver is installed and ready to use.

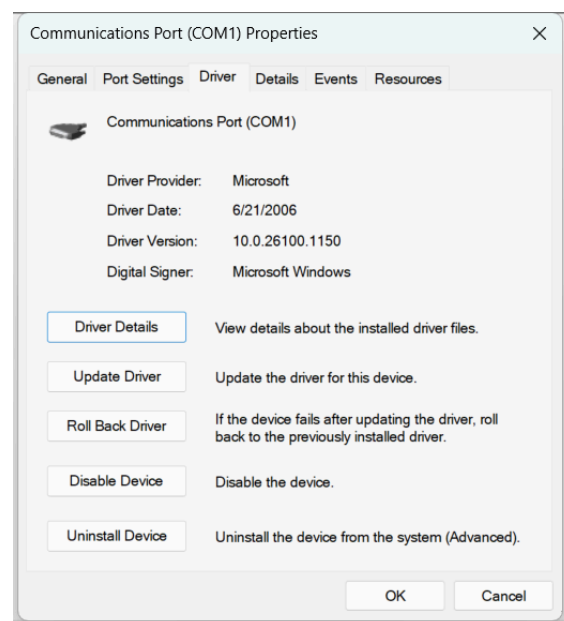


Figure 3

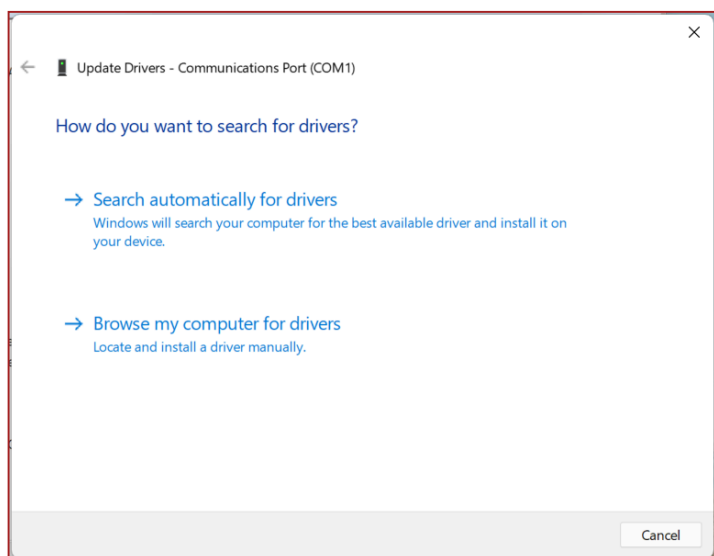


Figure 4

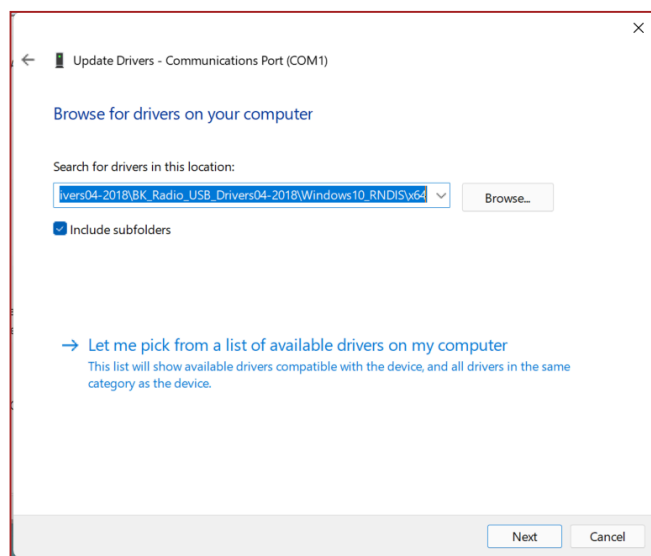


Figure 5

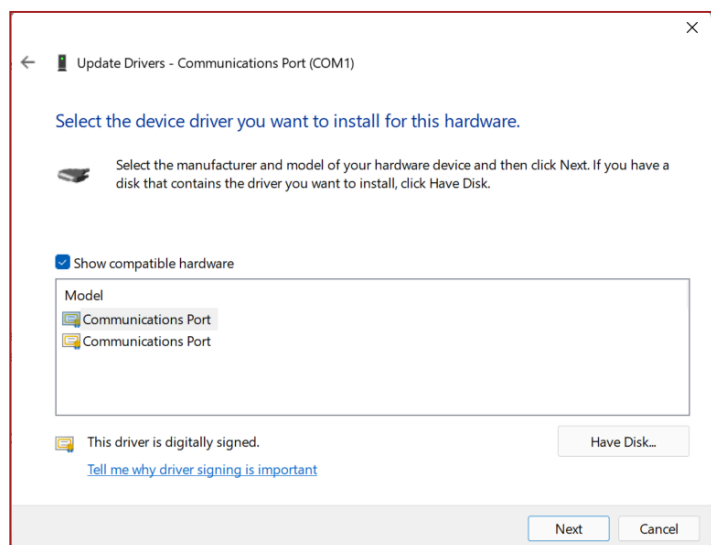


Figure 6

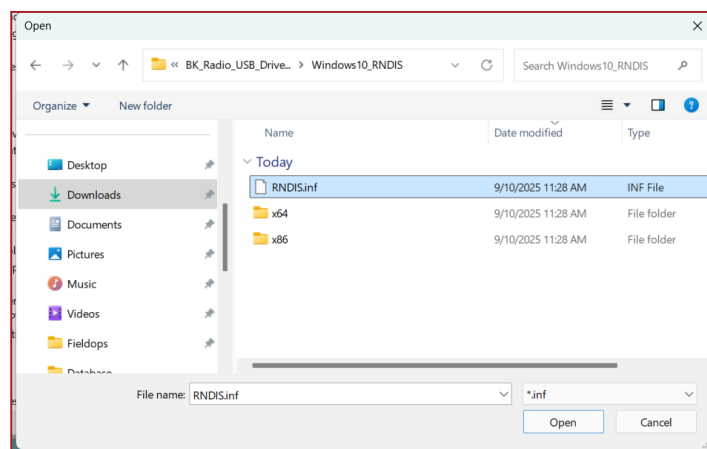


Figure 7