

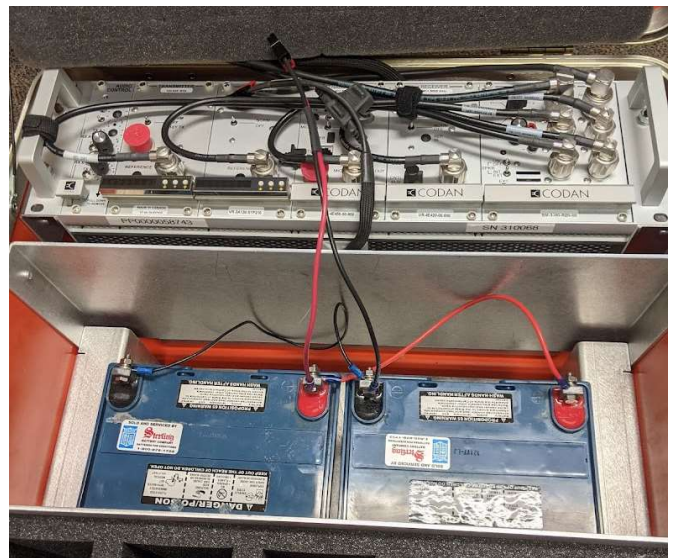
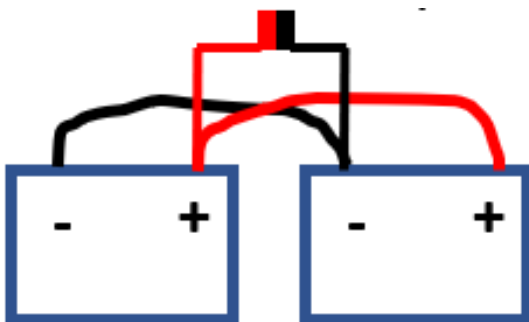
Sealed Lead Acid (SLA) Battery Installation Instructions for Repeaters & Aircraft Links

**Save all packaging for SLA batteries to use for shipping
batteries back to the NIFC Radio Cache.**



1. Supplied materials
 - 35 Amp-hr battery x 4
(2 for in the equipment and 2 as spares)
 - Red/Black jumpers
 - Cable assembly power pole
 - Hardware
 - Electrical tape (not shown)

2. Configure batteries in parallel
 - Ensure both batteries are fully charged
 - Jumper red to red and black to black
 - Connect power pole cable assembly



Installation Instructions SLA Batteries Repeaters & Aircraft Links

Save all packaging for SLA batteries to use for shipping batteries back to the NIFC Radio Cache.

3. Always cover the terminals to prevent accidental short circuits
4. **Always remove batteries before transporting the equipment.**



5. **Never** install batteries with the terminals facing each other.

Charging Instructions for SLA Batteries



1. Configure charger for 12V and AGM/Flooded using the select button



2. Connect charging clips to begin charge. An completely discharged battery will take about 10-hours to fully charge. Battery is charged when indicator light is green.

Warnings SLA Batteries

1. The terminals on SLA batteries are exposed and prone to accidental short circuiting during transportation. Additionally, SLA batteries will discharge much more violently in the event of a short circuit compared to alkaline batteries. Always take appropriate precautions to ensure the terminals are protected with electrical tape, cardboard or other non-conductive material to prevent short circuits while transporting SLA batteries.
2. **DO NOT** transport repeaters or other equipment with SLA batteries installed. Use original packaging to transport SLA batteries to and from mountain top locations.
3. When transporting SLA batteries, remove all jumper wires and cables.
4. **DO NOT** connect a dead battery to a fully charged battery.

Demob Instructions SLA Batteries



1. Use original packaging to ship battery back to the Radio Cache.
 - If original packaging is in poor condition, or Styrofoam is missing, do not ship back. Recycle the battery locally.

2. Package battery as shown.
 - Do not package anything else with the battery. Return hardware and jumpers separately.



3. Ensure “Non-spillable batteries” “Non-hazardous” is clearly visible on the side of the package.
 - When packaged in this manner, the battery can be shipped non-restricted.