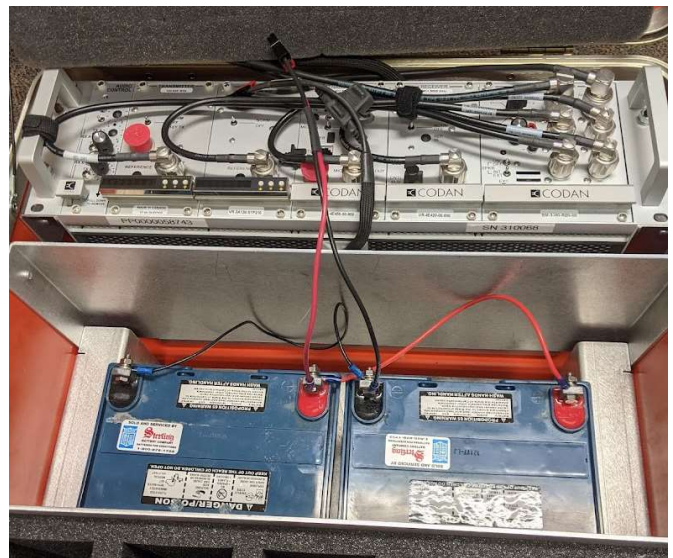
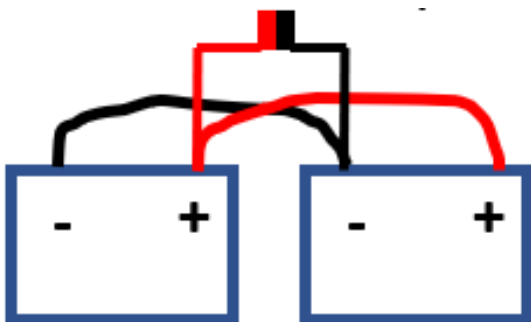


Sealed Lead Acid (SLA) Battery Installation Instructions for 4312/4248 Repeaters & 4370 Aircraft Links



1. Supplied materials
 - 35 Amp-hr battery x 4 (2 for in the equipment and 2 as spares)
 - Red/Black jumpers
 - Cable assembly power pole
 - Hardware
 - Electrical tape (not shown)

2. Configure batteries in parallel
 - Ensure both batteries are fully charged
 - Jumper red to red and black to black
 - Connect power pole cable assembly



SLA Battery Installation Instructions for 4312/4248 Repeaters & 4370 Aircraft Links

3. Always cover the terminals to prevent accidental short circuits
4. **Always remove batteries before transporting the equipment.**



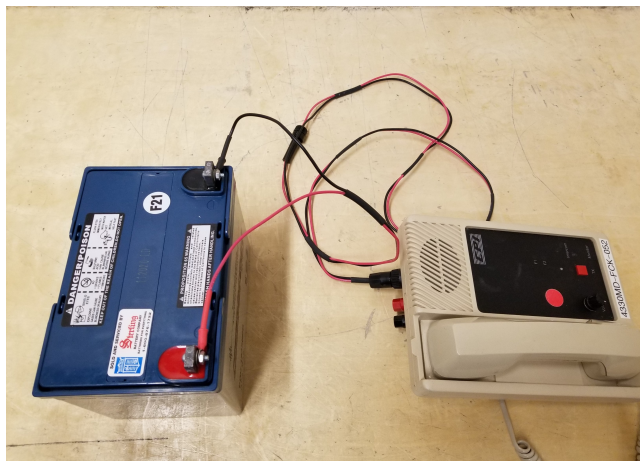
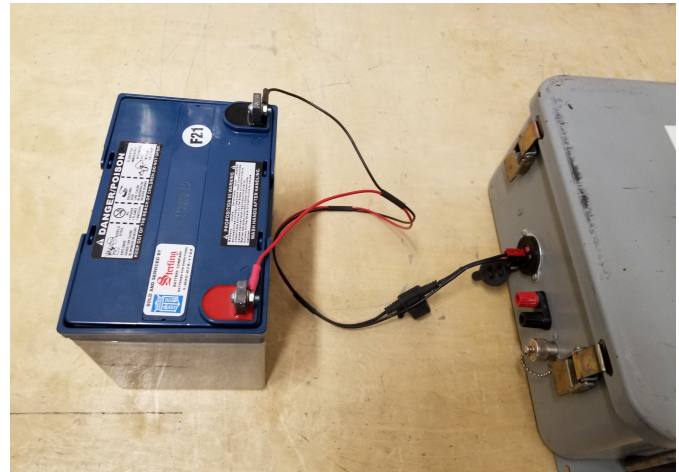
5. **Never** install batteries with the terminals facing each other.

SLA Battery Installation Instructions for 4330 Remotes



1. Supplied materials
 - 35 Amp-hr battery x 4 (2 for in the equipment and 2 as spares)
 - Red/Black jumpers
 - Cable assembly power pole
 - Hardware
 - Electrical tape (not shown)

2. Connect remote gray box as shown



3. Connect remote handset as shown

Charging Instructions for SLA Batteries



1. Configure charger for 12V and AGM/Flooded using the select buttons



2. Connect charging clips to begin charge. An completely discharged battery will take about 10-hours to fully charge. Battery is charged when indicator light is green.

SLA Battery Warnings

1. The terminals on SLA batteries are exposed and prone to accidental short circuiting during transportation. **Additionally, SLA batteries will discharge much more violently in the event of a short circuit compared to alkaline batteries.** Always take appropriate precautions to ensure the terminals are protected with electrical tape, cardboard or other non-conductive material to prevent short circuits while transporting SLA batteries.
2. **DO NOT** transport repeaters or other equipment with SLA batteries installed. Use original packaging to transport SLA batteries to and from mountain top locations.
3. When transporting SLA batteries, remove all jumper wires and cables.
4. **DO NOT** connect a dead battery to a fully charged battery.