

# 2016 BLM SAFECOM SUMMARY



**BLM Aviation**  
BLM Aviation

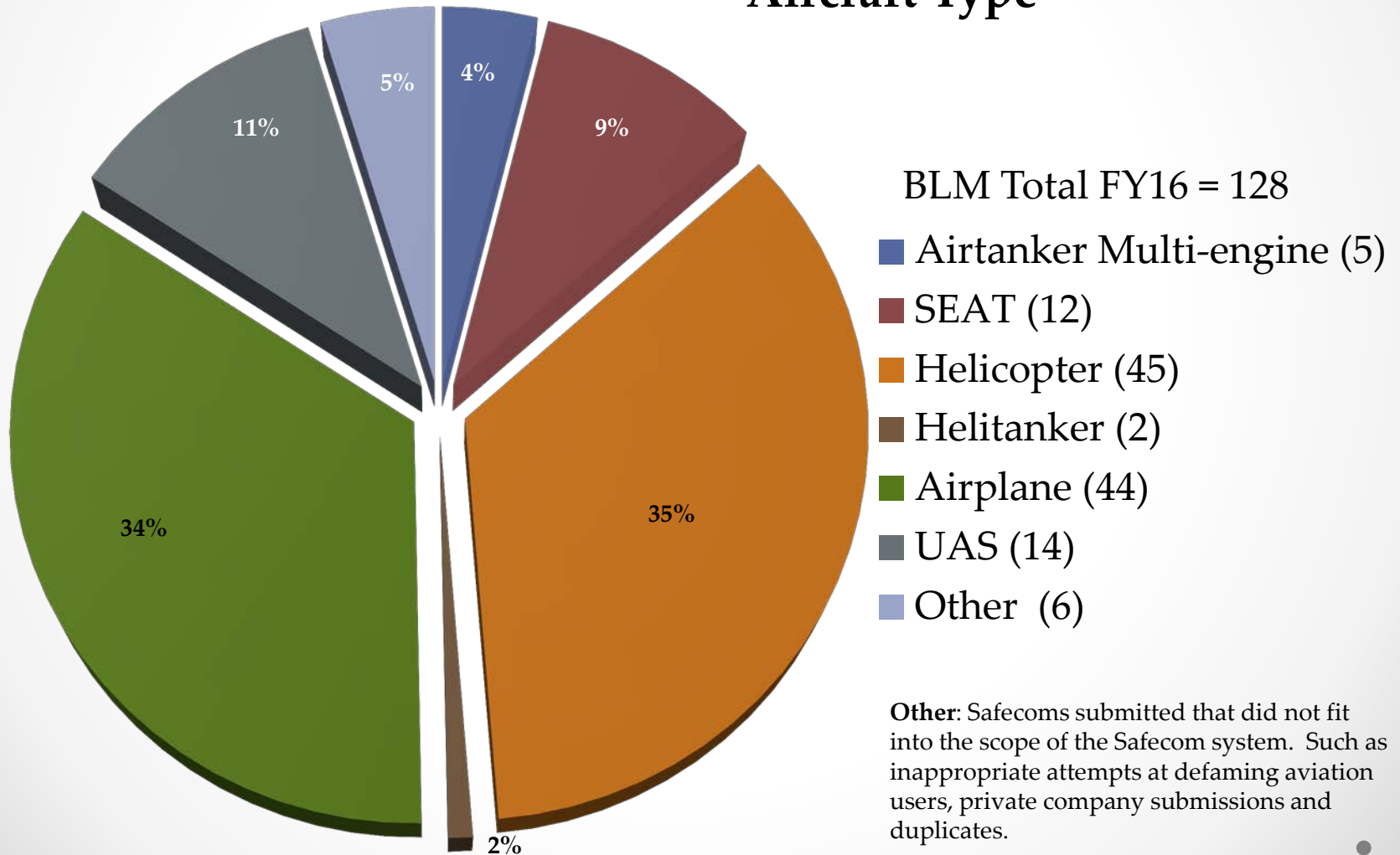


Kirk Rothwell National Aviation Safety & Training Advisor



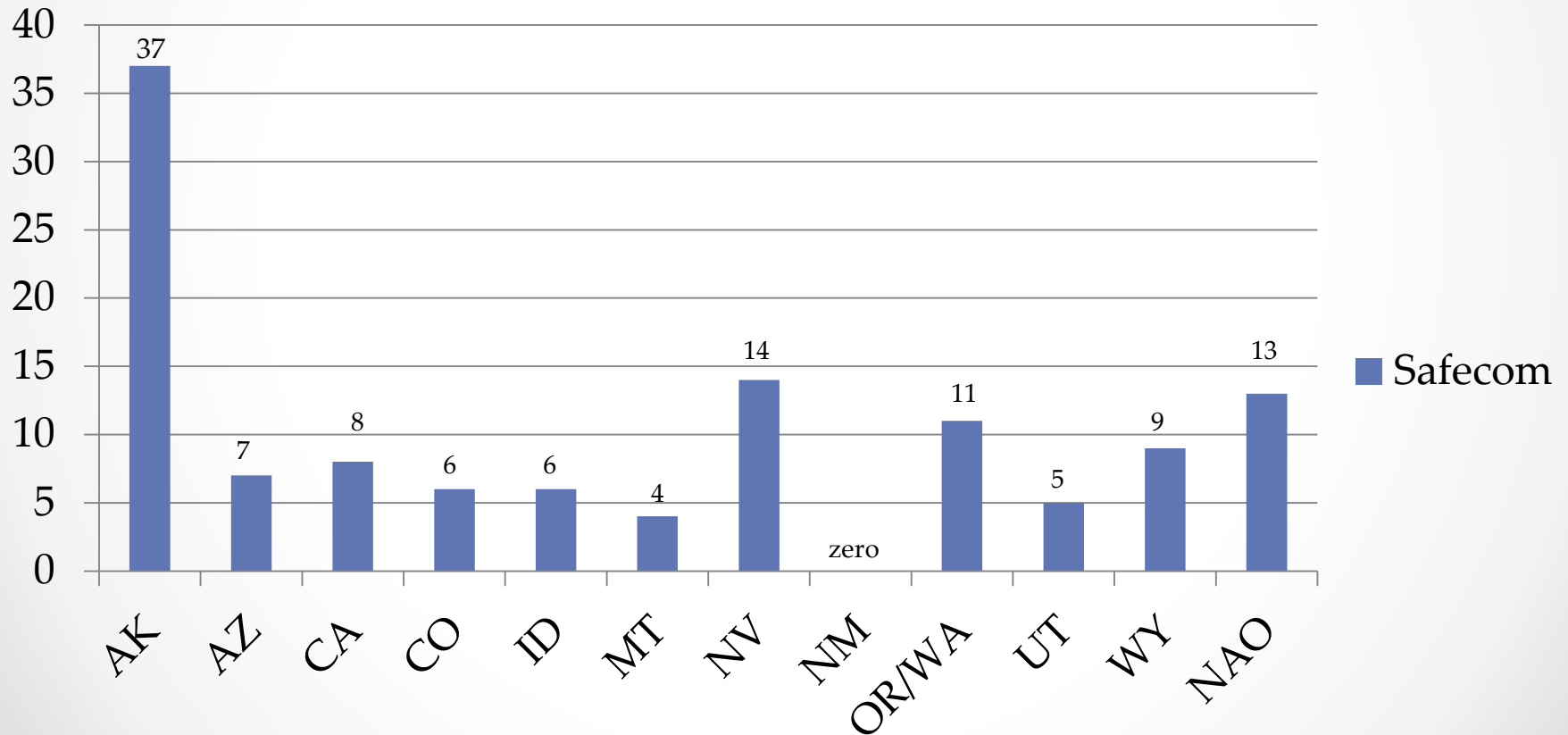
# 2016 BLM Safecomms

## Aircraft Type



# 2016 BLM Safecomms

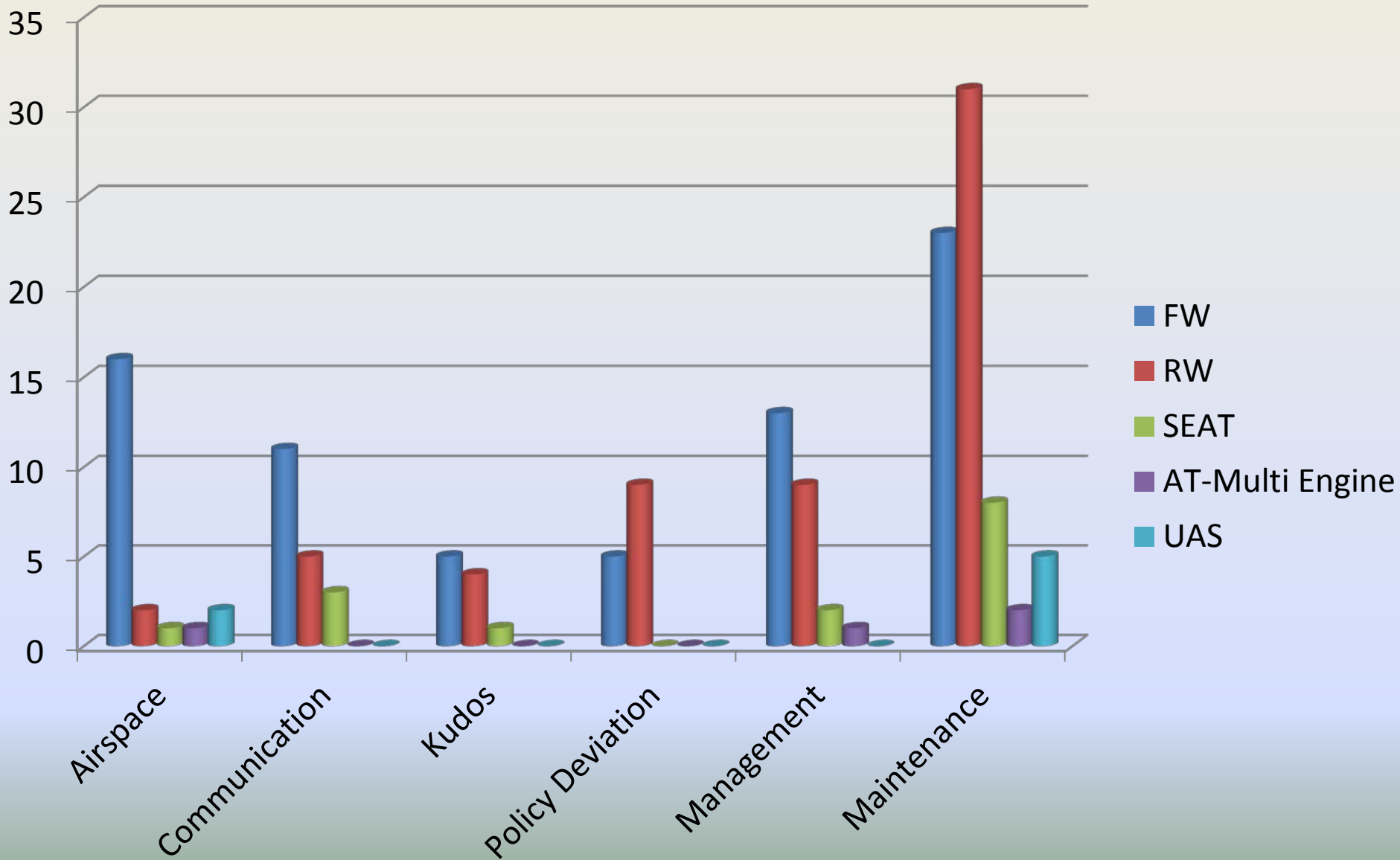
## Safecom by State



# 2016 BLM Safecomms

2016		Type	2015	
# Submitted	%		# Submitted	%
5	4	Airtanker (multi-engine)	1	1
12	9	SEAT	9	9
45	35	Helicopter	45	45
2	2	Helitanker	1	1
44	34	Airplane	37	37
14	11	UAS	4	4
6	2	N/A	0	0
Total	128	~30% ↑ over FY15	99	

# 2016 BLM Safecomms



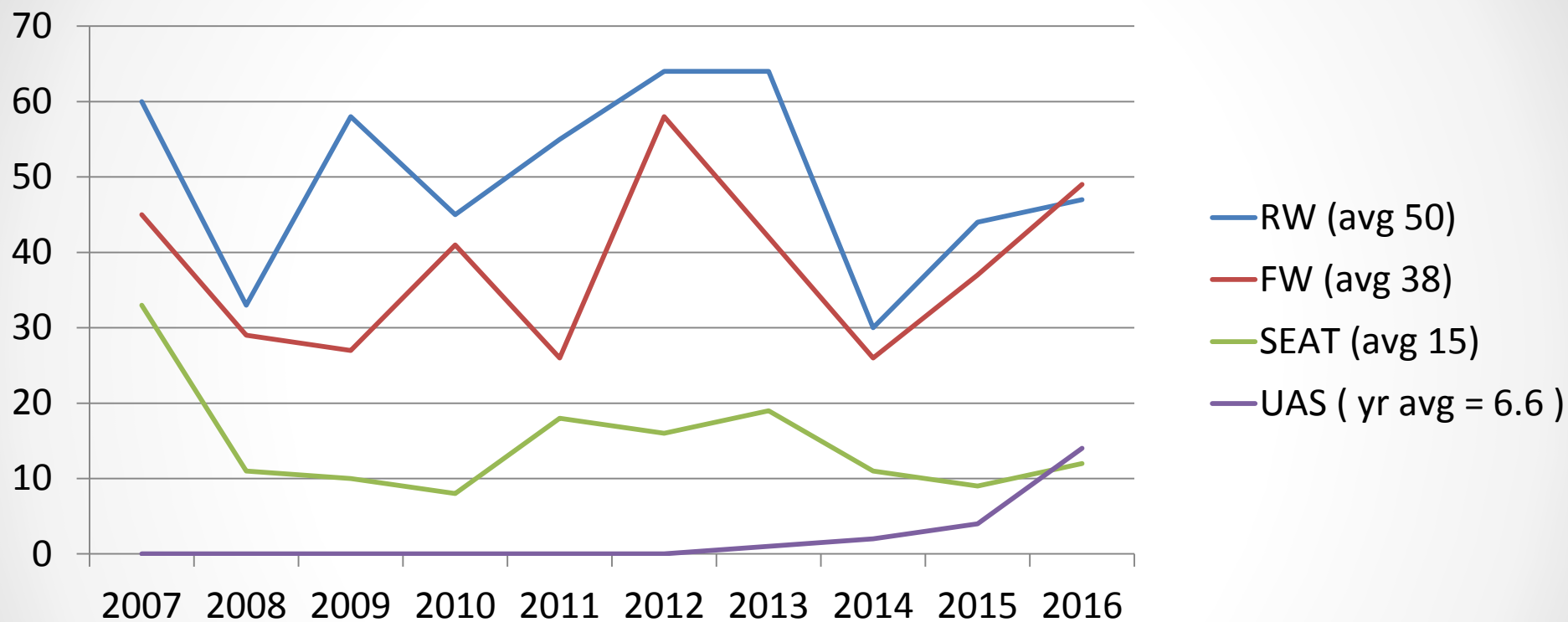
# 2016 BLM Safecom Submission Rate

Aircraft Type	2016 Flt Hours	÷	Total Safecom Submissions	=	Per flight hour
Rotor Wing	8856		47		1/188
Fixed Wing	14,624		49		1/298
SEAT	1927		12		1/160
UAS	62		14		1/4.4
Total All	23,479		122		1/192

**\*Safecom submitted during BLM Operational Control only\***

Does not reflect submissions by BLM aviation while under other bureau or agency operational control.

# Safecom Annual Submission Average with Flight Time Correlation



Total Flt Hrs.	28,099	18,501	17,453	19,682	17,236	30,322	24,900	15,040	22,338	23,479
RW	9057	6404	6589	8831	6227	12,285	6724	5974	4852	8856
FW	11,211	6916	7432	8527	8643	12,169	13,602	6474	12646	14624
SEAT	6581	4921	1817	1493	2366	5868	4574	2592	4439	1927
UAS	0	0	0	0	0	0	UNK	UNK	69	62